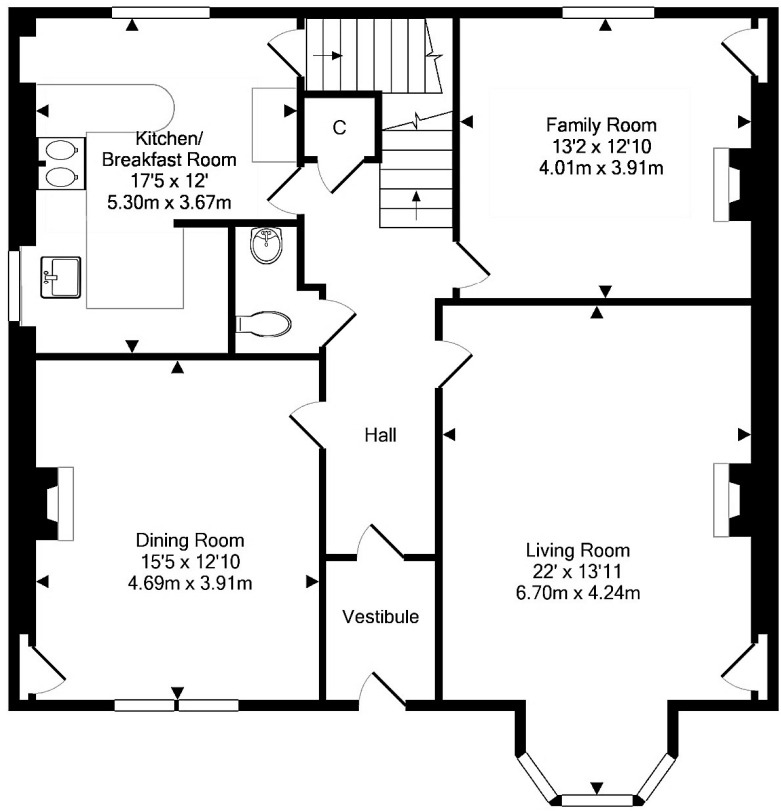
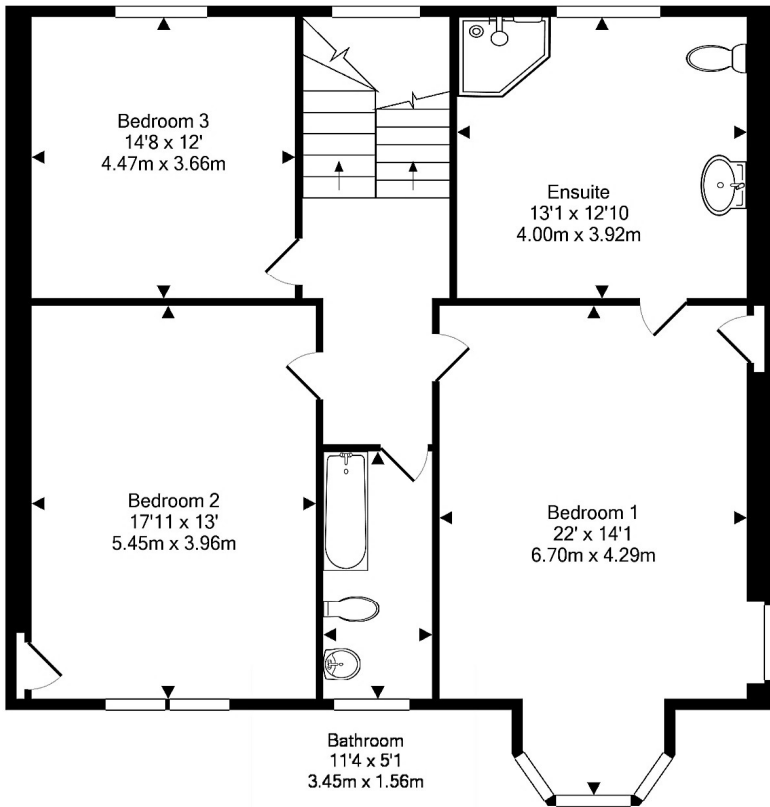


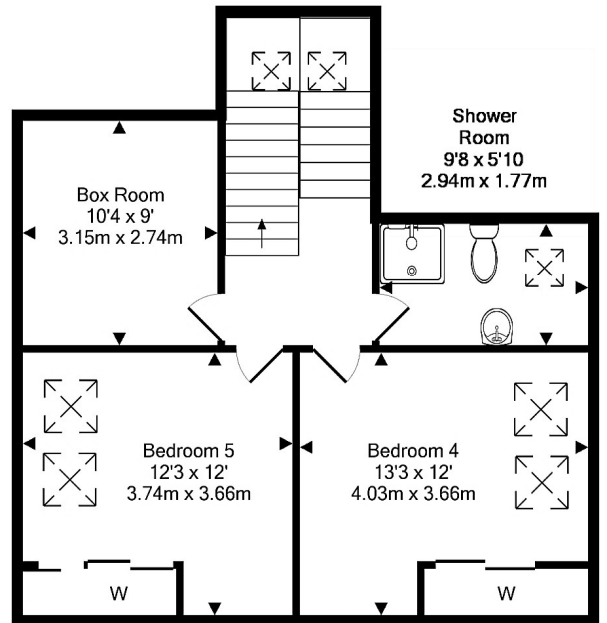
Basement Level  
Approx. Floor  
Area 289 Sq.Ft.  
(26.9 Sq.M.)



Ground Floor  
Approx. Floor  
Area 1013 Sq.Ft.  
(94.1 Sq.M.)



1st Floor  
Approx. Floor  
Area 1009 Sq.Ft.  
(93.7 Sq.M.)



2nd Floor  
Approx. Floor  
Area 554 Sq.Ft.  
(51.5 Sq.M.)

Total Approx. Floor Area 2866 Sq.Ft. (266.3 Sq.M.)

Whilst every attempt has been made to ensure the accuracy of the floor plan contained here, measurements of doors, windows, rooms and any other items are approximate and no responsibility is taken for any error, omission, or mis-statement. This plan is for illustrative purposes only and should be used as such by any prospective purchaser. The services, systems and appliances shown have not been tested and no guarantee as to their operability or efficiency can be given

Made with Metropix ©2018

