

**13/6 Richmond Terrace
Haymarket EH11 2BY**

Offers Over £230,000

South west facing bay windowed lounge
2 excellent bedrooms one with double platform bed
Kitchen with all appliances included
Entrance hallway with natural wood floor
Bright shower room with walk-in shower and wash hand basin
Separate WC with 2 piece suite
Gas central heating
Communal garden



Bright south west facing top floor flat with 2 bedrooms in central location

A bright and well proportioned south west facing traditional Victorian top floor flat retaining original features, within short walking distance of the city centre and with excellent transport links and local amenities.

With its central location the flat will appeal to the young professional or couple or the buy to let investor. Haymarket is within walking distance of the city centre and benefits from frequent bus and tram services which connect to all areas of the city. The transport hub at Haymarket station is ideal for the commuter with direct rail and tram links to the Gyle, Glasgow, Stirling, Fife and Edinburgh Airport.

Locally there are shopping facilities on Dalry Road that include a Co-op and a Lidl store plus all the high street outlets in the city centre.

Recreational facilities on the doorstep include a variety of popular bars, cafes and restaurants, the recently refurbished Dalry Swim Centre and Fountain Park Leisure Complex.

Council Tax Band C

Energy Rating E

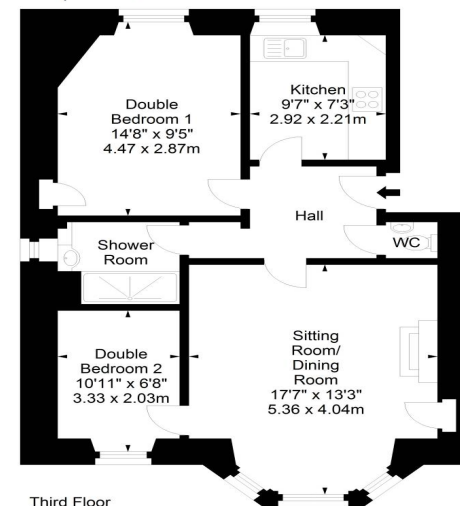
Viewing on Sunday 2-4pm or by appointment phone 0131 337 1800



Richmond Terrace,
Edinburgh,
Midlothian, EH11 2BY



Approx. Gross Internal Area
630 Sq Ft - 58.53 Sq M
For identification only. Not to scale.
© SquareFoot 2019



Property Centre:
1 Harrison Gardens
Edinburgh EH11 1SJ
Tel: 0131 337 1800
Fax: 0131 337 1118

DX ED 92, Edinburgh/Legal Post
LP - 19, Edinburgh 2
E-mail: office@blaircadell.com
www.blaircadell.com



espc

Zoopa.co.uk

BlairCadell
solicitors + estate agents