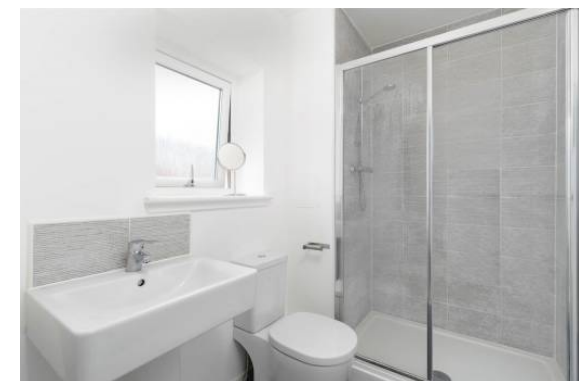
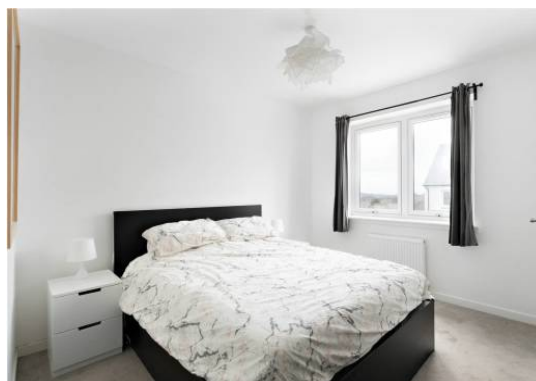


**10 Tweedie Lane
Currie EH14 5NJ**

Offers Over £270,000

Bright and spacious lounge
Modern dining kitchen with integral
appliances included
Master bedroom with en suite shower
room
2 further bedrooms
Separate WC and family bathroom
Gas central heating and double
glazing
Floored attic
Private rear garden with patio area
Off street parking



Attractively presented modern 3 bedroomed terraced villa in popular residential development

A beautifully presented modern mid terraced villa that is ideally located close to local schools and shopping facilities. The property offers well proportioned family sized accommodation that is in turn key condition throughout.

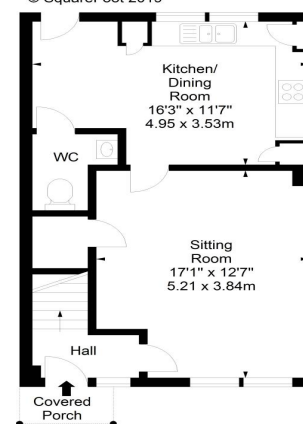
Currie is located approximately 6 miles from the city centre which can be accessed via a frequent bus and train service from Curriehill Station. The bypass is a short drive away giving swift access to the motorway network and the International Airport. The village has a Scotmid store plus a few specialist shops with additional facilities to be found at Hermiston Gait and The Gyle Centre. The area is served by excellent primary and secondary schools both of which are within walking distance of the property. Heriot Watt University is also close by. Recreational facilities include a number of well known golf courses, use of the sporting facilities at Heriot Watt, walks along the Water of Leith Walkway and in the Pentland Country Park.



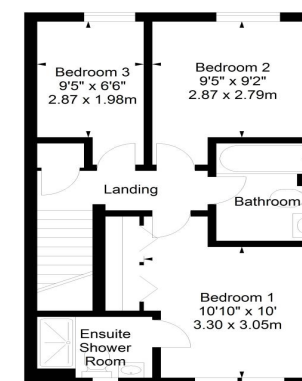
Tweedie Lane,
Currie,
Midlothian, EH14 5NJ



Approx. Gross Internal Area
950 Sq Ft - 88.26 Sq M
For identification only. Not to scale.
© SquareFoot 2019



Ground Floor



First Floor

Council Tax Band E

Energy Rating C

Viewing on Sunday 2-4pm or by appointment phone 0131 337 1800

Property Centre:
1 Harrison Gardens
Edinburgh EH11 1SJ
Tel: 0131 337 1800
Fax: 0131 337 1118

DX ED 92, Edinburgh/Legal Post
LP - 19, Edinburgh 2
E-mail: office@blaircadell.com
www.blaircadell.com



espc [Zoopla.co.uk](http://zoopla.co.uk)

BlairCadell
solicitors + estate agents