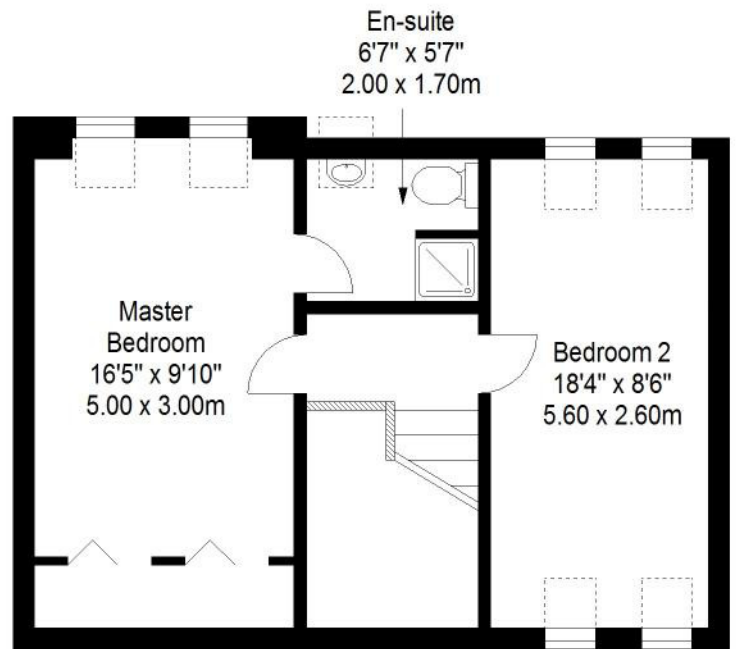
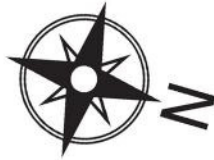


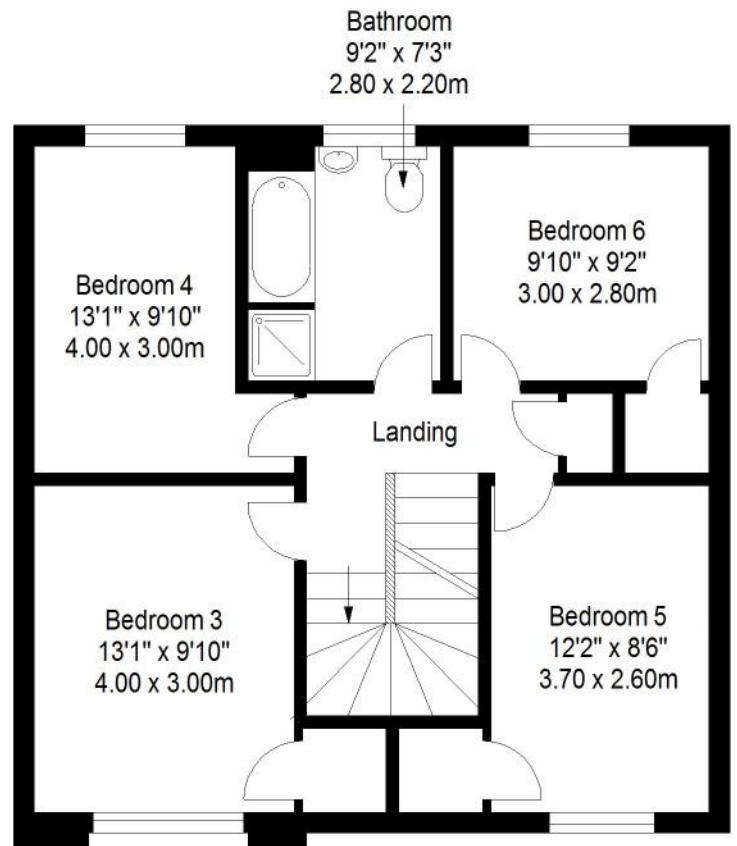
### Second Floor

Approx. 45.6 sq. metres (490.9 sq. feet)



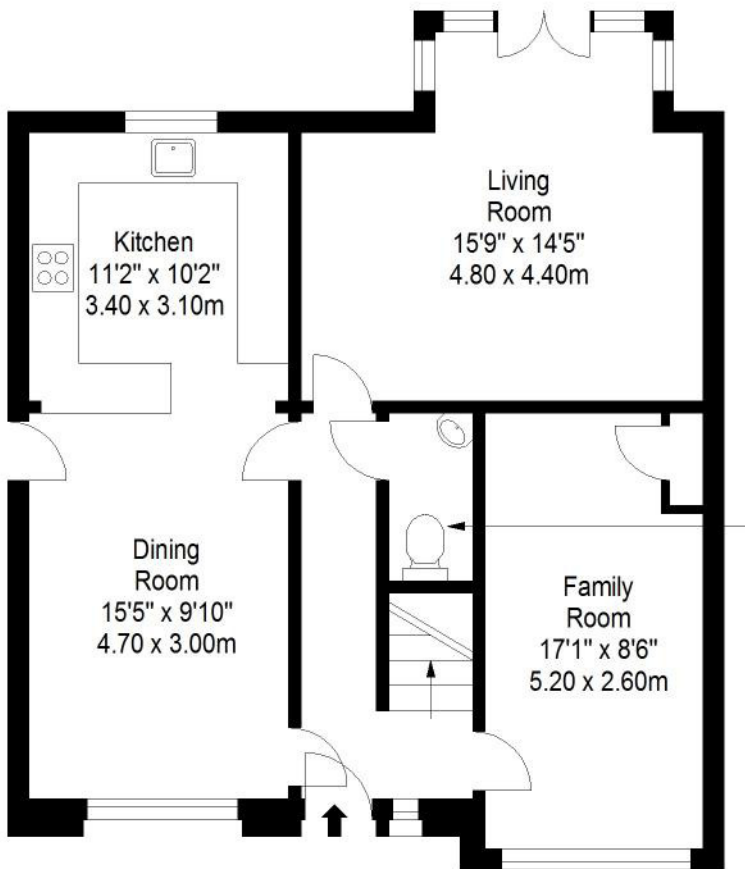
### First Floor

Approx. 64.0 sq. metres (688.9 sq. feet)



### Ground Floor

Approx. 68.7 sq. metres (739.5 sq. feet)



WC  
6'7" x 3'3"  
2.00 x 1.00m

Total area: approx. 185.3 sq. metres (1994.6 sq. feet)