



1/8 Largo Place

Leith, Edinburgh, EH6 4AG

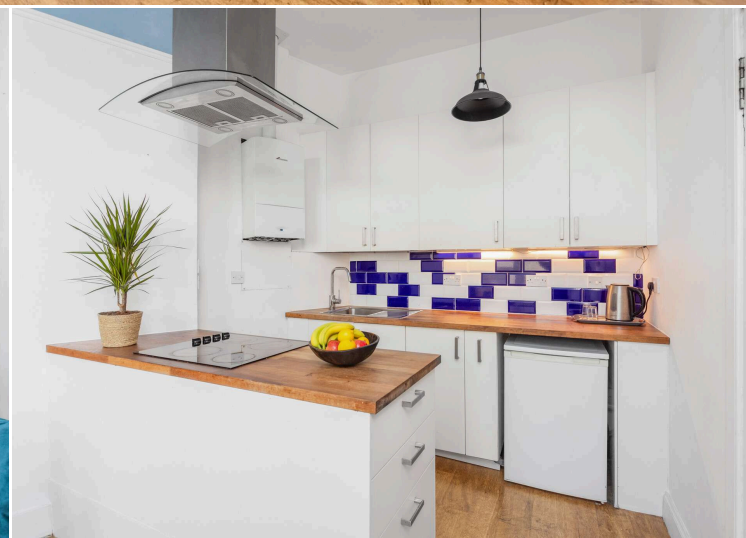


VMH ESTATE AGENTS



Top floor 2 bed flat with stunning castle views situated on a no through road in the popular Leith area.

- Sitting room/kitchen
- 2 double bedrooms
- Shower room
- W.C.
- Stunning castle views
- Secure entryphone system
- Communal rear garden
- Ideal for a first-time buyer
- Well presented & in move-in condition
- Gas central heating & double glazing



Offers Over: £225,000

EPC Rating: D

Council Tax: B

Tenure: Freehold

Further information can be found in the home report.

vmh.co.uk

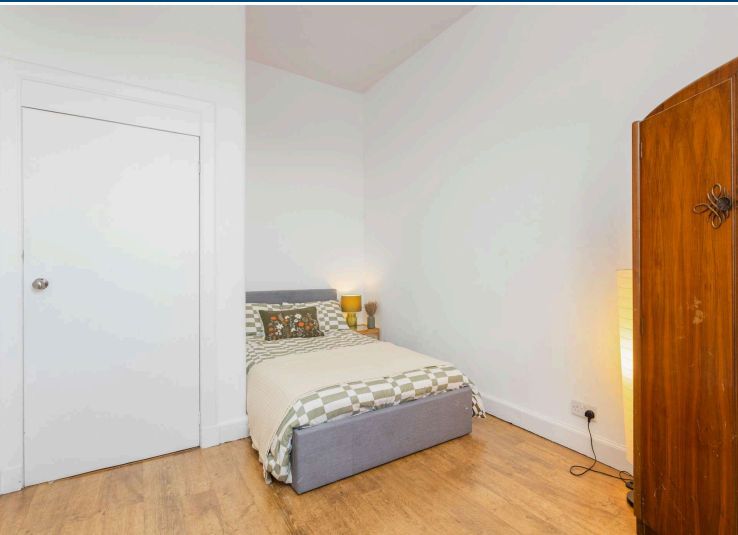
About the Property

Situated on a quiet no through road, 1/8 Largo Place is a 2 bed top floor flat with a leafy outlook over Keddie Gardens and views of Edinburgh Castle.

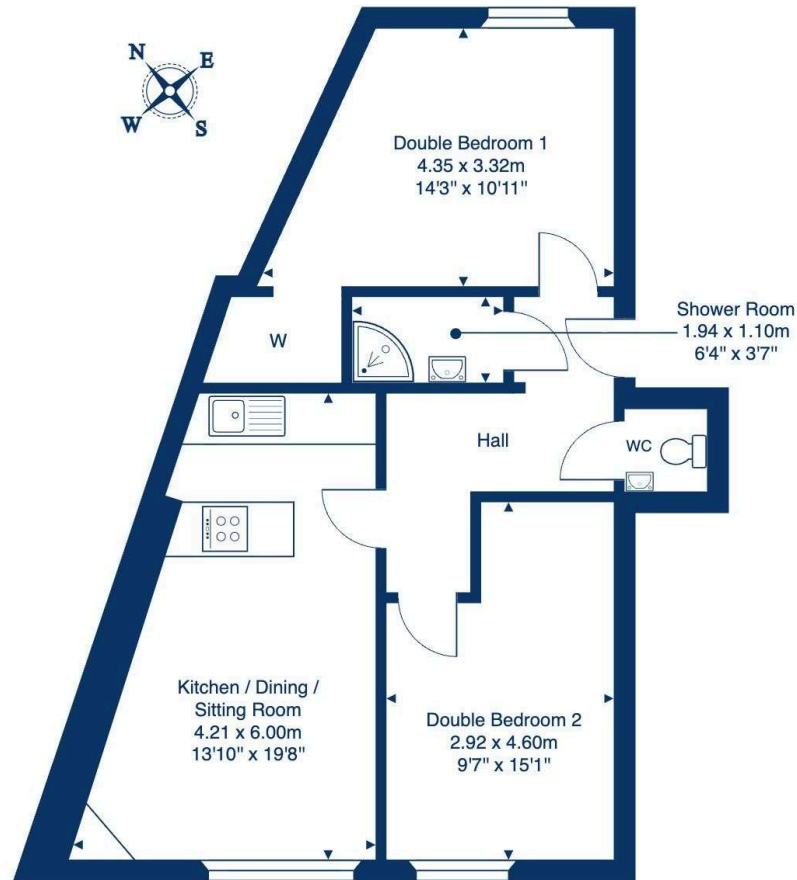
Internally the property offers bright and well-proportioned accommodation throughout making this ideal for a first-time buyer or professional.

Extras

To include all fitted light fittings, floor coverings, carpets, curtains, curtain rails, electric oven & hob, cooker hood & fridge.



1/8 Largo Place, Edinburgh, EH6 4AG



Third Floor

Total Area: 59.0 m² ... 635 ft²

All measurements are approximate and for display purposes only.

Location

Leith is a buzzing port district, just two miles northeast of the city centre. This historic and vibrant district is characterised by an eclectic mix of bars, cafés and restaurants. It incorporates the Shore area, a cosmopolitan waterfront with an array of pubs and restaurants and the Royal Yacht Britannia. There are plenty of shopping facilities in the immediate area and further amenities are easily accessible at Ocean Terminal with a wide range of high street stores, restaurants, a 24-hour gym and a multiplex cinema. For recreational facilities, the tranquil green spaces of Leith Links and Claremont Park are close by while Leith Victoria Swim Centre provides indoor sport & leisure facilities. An efficient bus & tram service run to and from the city centre and there are good road links to all major motorway networks.





VMH ESTATE AGENTS



VMH SOLICITORS

More is our middle name.

Registered Office: 8 Sibbald Walk, Edinburgh, EH8 8FT

 **0131 622 2626**

 **property@vmh.co.uk**

 **vmh.co.uk**

 **DX: 552210, Edinburgh 68**

The dimensions provided are for illustration purposes only; detailed measurements should be taken personally. No documentation will be exhibited in respect of the compliance or otherwise of replacement windows.
Although every attempt has been taken to ensure accuracy, the details within the brochure are not guaranteed or warranted and will not form part of any future contract to buy.