



36/7 Kimmerghame Place

Fettes, Edinburgh, EH4 2GE



VMH ESTATE AGENTS

36/7 Kimmerghame Place

Superb, stylish 2 bedroom third floor flat with south-facing balcony & allocated parking space

- Open plan kitchen/dining/sitting room
- Lovely south-facing balcony
- Principal bedroom with en-suite
- Double bedroom 2 - built-in wardrobes
- Bathroom
- Exclusive modern development
- Desirable residential area
- Well maintained shared grounds
- Secure underground allocated parking
- Gas central heating & double glazing

Offers Over: £315,000

EPC Rating: B

Council Tax: F

Tenure: Freehold

Further information can be found in the home report.



About the Property

Forming part of an exclusive modern development this stunning 2 bedroom third floor flat benefits from a south-facing balcony and an allocated parking space in the secure underground residents' car park. The development is located in the highly sought after residential area of Fettes which has superb local amenities within easy reach. The spacious interior is tastefully presented throughout and flooded with natural light. Some particular selling points to note are quality fixtures and fittings, lift access and a secure entryphone system.

Management

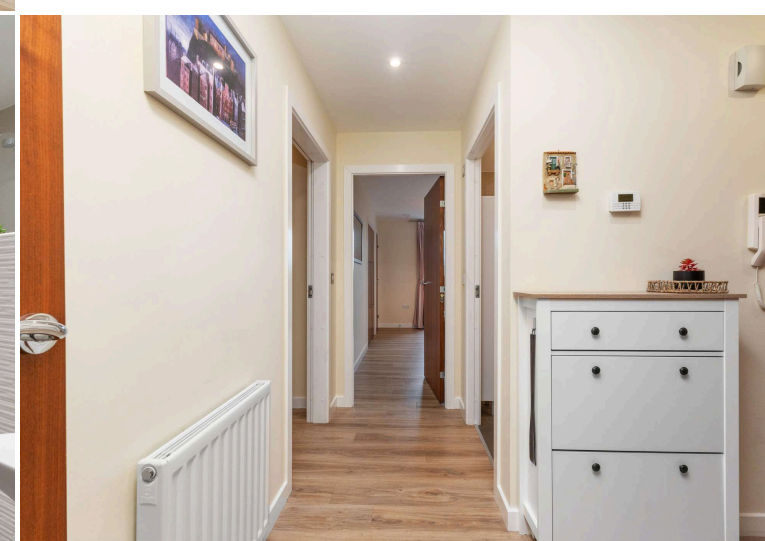
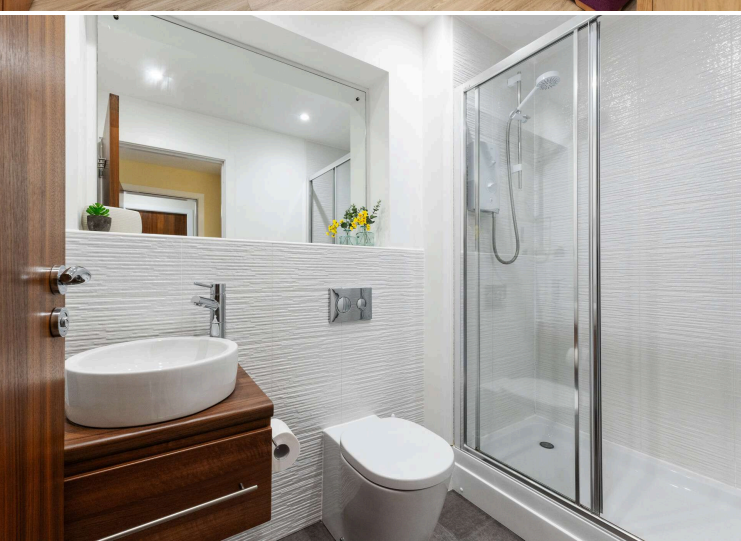
The development is factored and maintained by Speirs Gumley. The monthly payments are £196, which includes block buildings insurance.

Extras

All fitted floor coverings, blinds, hob, oven, extractor hood, fridge/freezer, dishwasher and washing machine are included in the sale price.





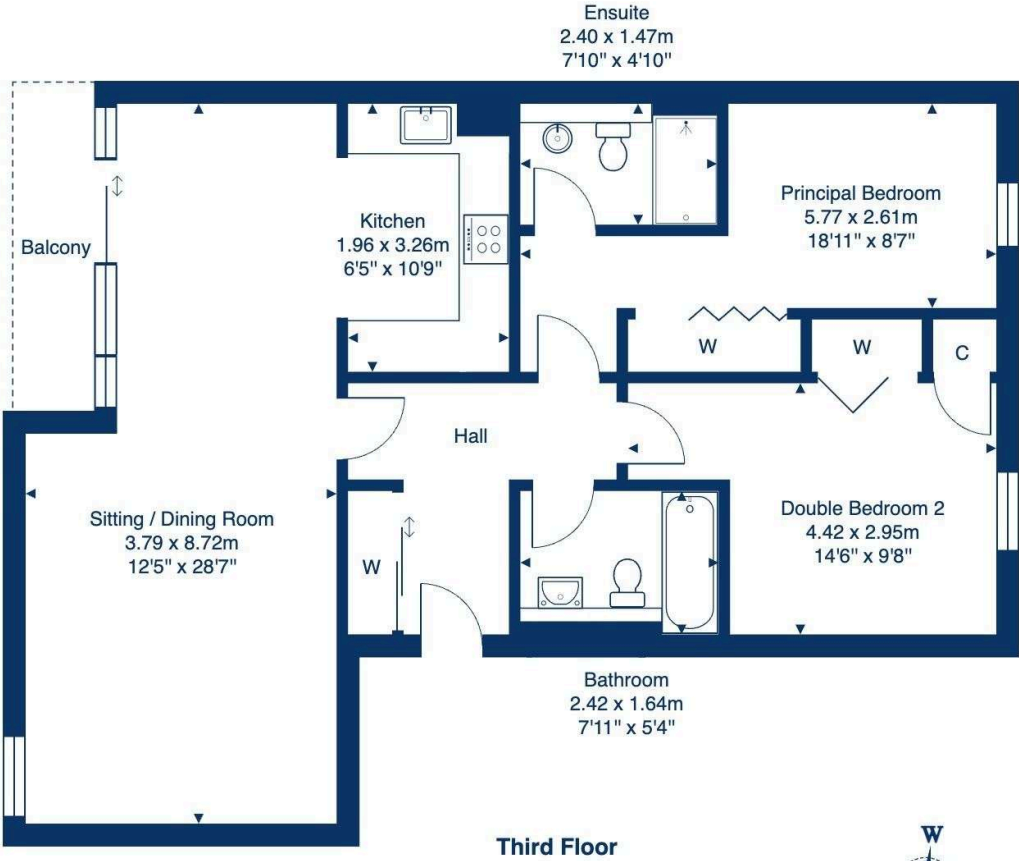


Location

Fettes is one of the most popular areas in Edinburgh being surrounded by green open space yet still within walking distance of the city centre. It is also served by a number of frequent bus services which run into the city centre and beyond. There are excellent local amenities in nearby Stockbridge including convenience shops, fashionable bars and restaurants and quaint coffee shops. The area is also well served by supermarkets and Craighleith Retail Park, all of which are within a short drive. The recreational spaces of The Royal Botanic Gardens and Inverleith Park are close by and there are leisure facilities at the local Westwood Health Club. Pleasant walks can also be enjoyed along the nearby Water of Leith pathways.

Floor Plan

36/7 Kimmerghame Place, Edinburgh, EH4 2GE



Total Area: 80.5 m² ... 866 ft²

All measurements are approximate and for display purposes only.



VMH ESTATE AGENTS



VMH SOLICITORS

More is our middle name.

Registered Office: 8 Sibbald Walk, Edinburgh, EH8 8FT

 **0131 622 2626**

 **property@vmh.co.uk**

 **vmh.co.uk**

 **DX: 552210, Edinburgh 68**

The dimensions provided are for illustration purposes only; detailed measurements should be taken personally. No documentation will be exhibited in respect of the compliance or otherwise of replacement windows.
Although every attempt has been taken to ensure accuracy, the details within the brochure are not guaranteed or warranted and will not form part of any future contract to buy.