



148 Tryst Park

Fairmilehead, Edinburgh, EH10 7HE



VMH ESTATE AGENTS



148 Tryst Park

Superb 3 bedroom detached family home with south-facing garden, garage & driveway

- Spacious sitting/dining room
- Conservatory - fabulous views
- Stylish kitchen
- 3 well proportioned bedrooms
- Contemporary family bathroom
- Wonderful views of the Pentland Hills
- Popular & convenient location
- South-facing private garden
- Garage & driveway
- Gas central heating & double glazing

Offers Over: £405,000

EPC Rating: D

Council Tax: F

Tenure: Freehold

Further information can be found in the home report.



About the Property

Located in the desirable residential area of Fairmilehead, this impressive 3 bedroom detached family home benefits from fabulous views of the Pentland Hills. Peacefully located in a modern development within easy reach of local amenities and the city bypass, the property also has a lovely south-facing rear garden, garage (with utility area) and driveway.

The interior is tastefully presented throughout and has well proportioned, bright accommodation over two levels.

Extras

All fitted carpets, blinds, light fittings, hob, oven, microwave and dishwasher.







Location

Fairmilehead is a quiet popular residential area situated a few miles south of the city centre. Its proximity to the city bypass makes it ideal for the commuter with easy access to the M8, M9, Edinburgh International Airport, Edinburgh Royal Infirmary, University of Edinburgh, the Queensferry Crossing, Fife and beyond. There are also regular bus services to and from the city centre. There are good local shops and a large Morrisons superstore close by at Hunters Tryst and a Tesco supermarket at Colinton Mains. Excellent recreational opportunities in the area include several golf courses, lovely walks at Braidburn Park, the Braid Hills, Hermitage of Braid Walkway, Blackford Hill and the Pentland Hills. Midlothian Snowsports Centre at Hillend is also minutes away.

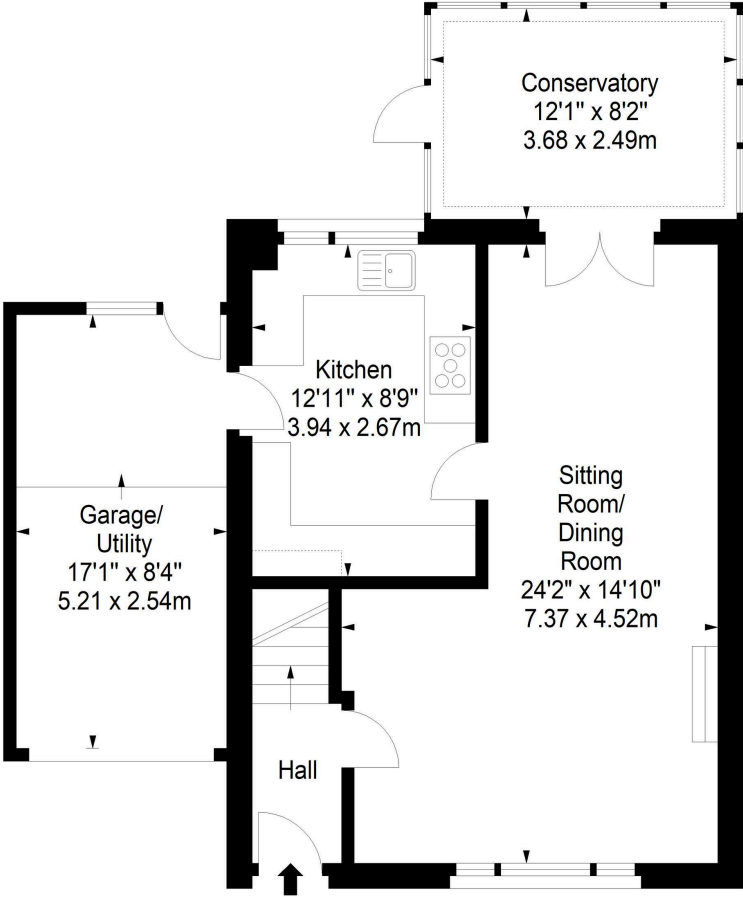


Floor Plan

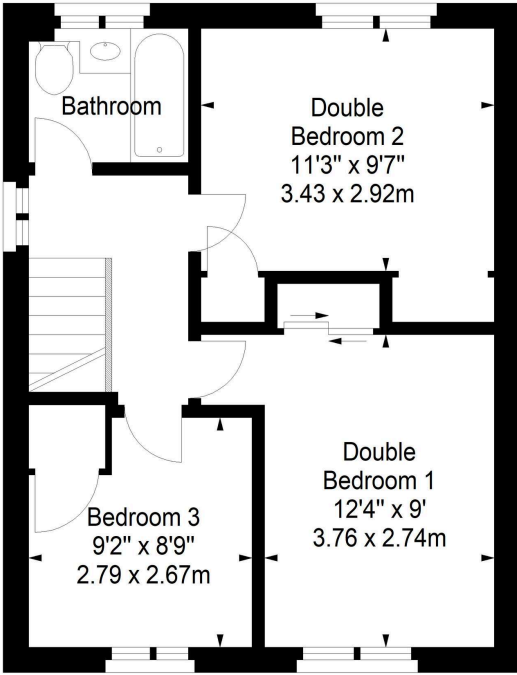
Tryst Park,
Edinburgh,
Midlothian, EH10 7HE



Approx. Gross Internal Area
997 Sq Ft - 92.62 Sq M
Garage/ Utility
Approx. Gross Internal Area
140 Sq Ft - 13.01 Sq M
For identification only. Not to scale.
© SquareFoot 2024



Ground Floor



First Floor



VMH ESTATE AGENTS



VMH SOLICITORS

More is our middle name.

Registered Office: 8 Sibbald Walk, Edinburgh, EH8 8FT

 **0131 622 2626**

 **property@vmh.co.uk**

 **vmh.co.uk**

 **DX: 552210, Edinburgh 68**

The dimensions provided are for illustration purposes only; detailed measurements should be taken personally. No documentation will be exhibited in respect of the compliance or otherwise of replacement windows.
Although every attempt has been taken to ensure accuracy, the details within the brochure are not guaranteed or warranted and will not form part of any future contract to buy.