





Welcome to a beautiful one-bedroom fifth/top-floor apartment which forms part of the sought-after development, The Strand @ Portobello by Barratt Homes. Finished to exceptional standards and with modern finishings, the home is presented throughout in crisp white providing buyers with an attractive blank canvas. Furthermore, the residence is set within easy reach of all the coastal suburb offers, including supermarkets, restaurants, and bars, as well as excellent transport links and the stunning local beach. It offers a relaxed seaside lifestyle just a short 15 minutes' drive from the thriving heart of Edinburgh city centre. Extras: integrated kitchen appliances (electric hob, raised oven, fridge/freezer, and dishwasher) to be included in the sale. Please note, no warranties or guarantees shall be provided in relation to any of the services, moveables, and/or appliances included in the price, as these items are to be left in a sold as seen condition.



FEATURES

- A stylish fifth/top-floor apartment
- Part of a contemporary development
- Situated in highly sought-after Portobello
- Short walk from the long sandy beach
- Impressive sea and Arthur's Seat views
- Modern neutral interiors throughout
- Secure entry and a convenient lift service
- Welcoming entrance hall with storage
- Spacious living and dining room
- Modern kitchen with integrated appliances
- Double bedroom with mirrored wardrobe
- Contemporary three-piece shower room
- Ample residents' parking







"A MODERN ONE-BEDROOM
FIFTH/TOP-FLOOR
APARTMENT WITHIN A
SOUGHT-AFTER
DEVELOPMENT IN
PORTOBELLO"





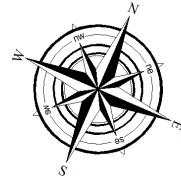
EPC RATING:

C

COUNCIL TAX BAND:

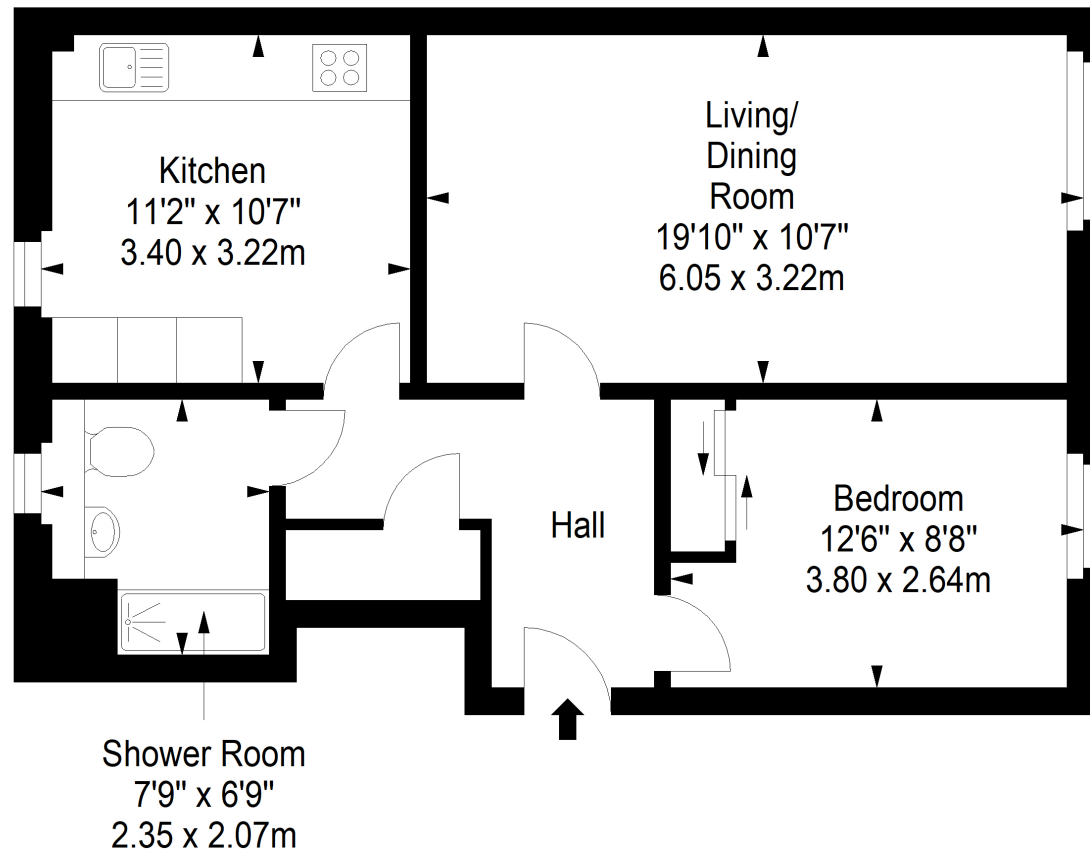
C

VIEWINGS: by appointment with Gilson Gray on 0131 516 5366



Fifth Floor

Approx. 54.4 sq. metres (585.6 sq. feet)



Total area: approx. 54.4 sq. metres (585.6 sq. feet)



GILSONGRAY.CO.UK

EDINBURGH

29 Rutland Square
EH1 2BW
0131 516 5366



GLASGOW

160 West George Street
G2 2HQ
0141 530 2021



EAST LOTHIAN

33 Westgate
EH39 4AG
01620 893 481



DUNDEE

2 West Marketgait
DD1 1QN
01382 201 000



BORDERS

01890 880 008



@gilsongrayprop gilson gray property gilson gray property @gilsongrayprop

These particulars were prepared on the basis of our own knowledge of the local area and, in respect of the property itself, information supplied to us by our clients; all reasonable steps were taken at the time of preparing these particulars to ensure that all details contained in them were accurate. All statements contained in the particulars are for information only and all parties should not rely upon them as statements or representations of fact. In particular, (a) descriptions, measurements and dimensions, which may be quoted in these particulars are approximate only and (b) all references to conditions, planning permission, services, usage, constructions, fixtures and fittings and movable items contained in the property are for guidance only. Our clients may instruct us to set a closing date for offers at short notice and therefore if you wish to pursue interest in this property, you should immediately instruct your solicitor to note interest with us. Our clients reserve the right to conclude a bargain for the sale of the above subjects or any part thereof ahead of a notified closing date and will not be obliged to accept either the highest or indeed any offer for the above subjects or any part thereof. All measurements have been taken using a sonic tape and cannot be regarded as guaranteed given the limitations of the device. Services and/or appliances referred to in these particulars have not been tested and no warranty is given that they are in full working order.