



GILSON GRAY

LAW • PROPERTY • FINANCE

1 VIEWFORTH

North Berwick, East Lothian EH39 4JA



Located in seaside North Berwick, within walking distance of gorgeous beaches, this two-bedroom end-of-terrace house enjoys sun-facing, spacious accommodation and neutral interiors. The period home features a sunny living room with a focal fireplace and press cupboard with shelving, a dining kitchen with contemporary cabinetry, and two carpeted double bedrooms with a southwest-facing window. Completing the accommodation is a family bathroom with a shower-over-bath and towel radiator. Outside the coastal home, 1 Viewforth residents are strolling distance from shops, green spaces and bus links. Extras: all fitted floor and window coverings, light fittings and kitchen appliances are included in the sale. No warranties or guarantees shall be provided in relation to any of the services, moveables, and/or appliances included in the price, as these items are to be left in a sold as seen condition.



FEATURES

- Handsome traditional end-terrace
- Situated in coastal North Berwick
- A stone's throw from West Bay Beach
- Exciting redecoration opportunities
- Entrance hall with under-stair storage
- Sun-filled living room with fireplace
- Dual-aspect dining kitchen
- Landing with storage space
- Two southwest-facing bedrooms
- Modern family bathroom
- Parking available nearby
- Electric heating and traditional windows







"A SPACIOUS TWO-BEDROOM END-TERRACE OFFERING BUYERS AN EXCITING BLANK CANVAS TO CUSTOMISE TO THEIR STYLE."





EPC RATING:



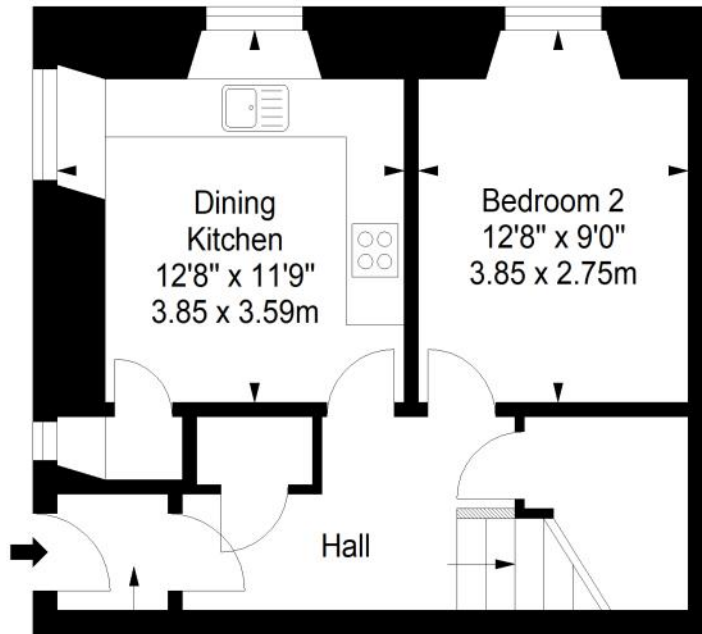
COUNCIL TAX BAND:



VIEWINGS: by appointment with Gilson Gray on 01620 893 481

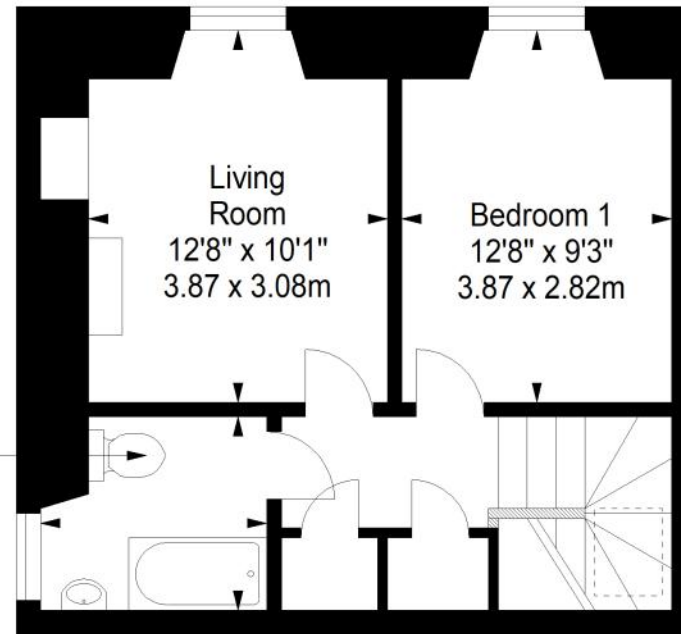
Ground Floor

Approx. 34.5 sq. metres (371.4 sq. feet)



First Floor

Approx. 35.5 sq. metres (382.1 sq. feet)



Vestibule

Total area: approx. 70.0 sq. metres (753.5 sq. feet)



GILSONGRAY.CO.UK

EDINBURGH

29 Rutland Square
EH1 2BW
0131 516 5366



GLASGOW

160 West George Street
G2 2HQ
0141 530 2021



EAST LOTHIAN

33 Westgate
EH39 4AG
01620 893 481



DUNDEE

2 West Marketgait
DD1 1QN
01382 201 000



BORDERS

01890 880 008



@gilsongrayprop gilson gray property gilson gray property @gilsongrayprop

These particulars were prepared on the basis of our own knowledge of the local area and, in respect of the property itself, information supplied to us by our clients; all reasonable steps were taken at the time of preparing these particulars to ensure that all details contained in them were accurate. All statements contained in the particulars are for information only and all parties should not rely upon them as statements or representations of fact. In particular, (a) descriptions, measurements and dimensions, which may be quoted in these particulars are approximate only and (b) all references to conditions, planning permission, services, usage, constructions, fixtures and fittings and movable items contained in the property are for guidance only. Our clients may instruct us to set a closing date for offers at short notice and therefore if you wish to pursue interest in this property, you should immediately instruct your solicitor to note interest with us. Our clients reserve the right to conclude a bargain for the sale of the above subjects or any part thereof ahead of a notified closing date and will not be obliged to accept either the highest or indeed any offer for the above subjects or any part thereof. All measurements have been taken using a sonic tape and cannot be regarded as guaranteed given the limitations of the device. Services and/or appliances referred to in these particulars have not been tested and no warranty is given that they are in full working order.