



24 Ormidale Terrace, Edinburgh, EH12 6EQ



Welcome

24 Ormidale Terrace is a superb 4/5-bedroom Victorian terraced house situated on a wide residential street in the highly desirable area of Murrayfield.

The area is a particularly popular and convenient location given its proximity to a number of excellent schools, the City Centre, and the City Bypass. Internally the property boasts generously proportioned, flexible accommodation which is complimented by attractive period features throughout.

The bright and spacious accommodation comprises on the ground floor - vestibule, hall with under stair storage, sitting room with bay window and fireplace, dining room with French doors to the private and well-established back garden, fully equipped kitchen leading to utility room and a shower room, access to the rear garden. An impressive staircase leads to the first floor accommodation the drawing room which can also be used as the Master bedroom and has a bay window with impressive views towards the Pentland Hills. a welcoming fireplace, double bedrooms 1 and 4 look towards the garden at the rear. The second floor - landing with cupola above, two further double bedrooms, bedroom 2 with Pentland view and bedroom 3. Bathroom with corner unit bath with hand shower, separate W.C with additional storage

To the front of the property there is an attractive rockery garden. To the rear a lovely enclosed well-maintained garden. The garden has been beautifully landscaped with paving stones which are surrounded by mature flowering borders.







Murrayfield

Murrayfield is a prestigious and most desirable residential district of Edinburgh approximately one and a half miles west of the City Centre. The area is highly regarded for its leafy ambience and, of course its proximity to the home of Scottish rugby - Murrayfield Stadium.

Excellent local amenities at nearby Roseburn cater for day-to-day needs with more comprehensive shopping facilities available at the Gyle Shopping Centre or Craighleith Retail Park. There is a choice of highly regarded schools available in the area from nursery to senior level. Leisure pursuits are well catered for with a number of well-known golf courses, Edinburgh Zoo, Murrayfield Ice Rink and numerous museums and art galleries.

Extras

White goods, floor coverings, lamp shades and window coverings to be included.

Viewing by appointment only. Call Agent, Jacquie Sandison 07884 247419.





Get in touch

 mcdougallmcqueen.co.uk

 property@mcdougallmcqueen.co.uk

 0131 240 3818

Property Hub:

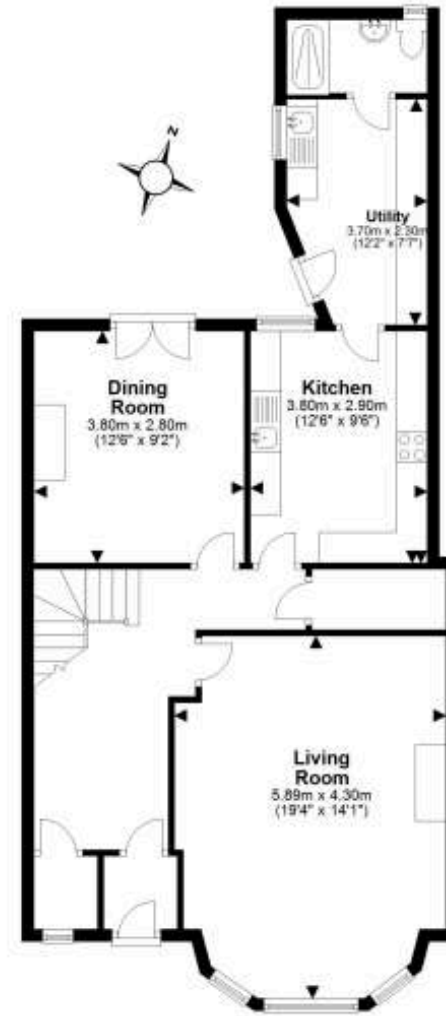
25-27 High Street, Dalkeith
EH22 1JB

Bruntsfield Office:

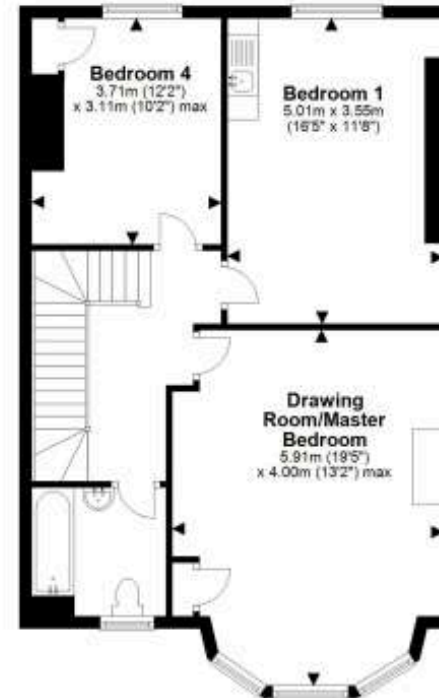
103-105 Bruntsfield Place,
Edinburgh EH10 4EQ



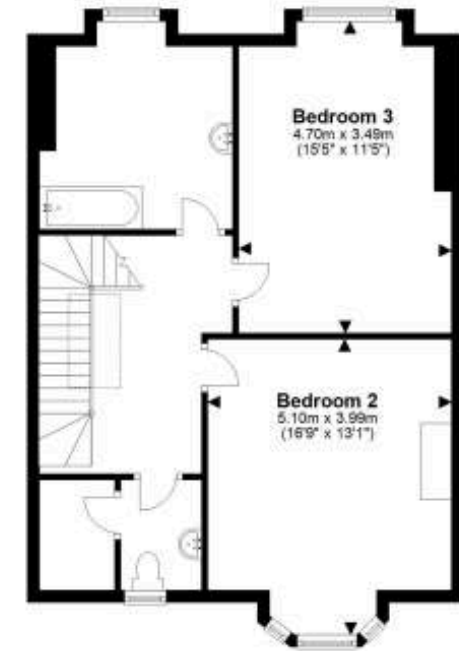
Disclaimer: Interested parties are advised to request their own solicitor to note interest with us as soon as possible after viewing. The Seller shall not be bound to accept the highest or any offer. These particulars do not form any contract and the statements or plans contained herein are not warranted nor to scale. Approximate measurements have been taken by sonic device at the widest point. Services and appliances have not been tested for efficiency or safety and no warranty is given as to their compliance with any Regulations. Only offers using the Combined Standard Clauses will be considered. Offers received not using these clauses will be responded to by deletion of the non-standard Clause and replaced with the Combined Standard Clauses. All appliances or other moveable items included in the price, whether integrated or otherwise, are not warranted by the seller. The working order of appliances will not be warranted.



Ground Floor



First Floor



Second Floor

For details of the total internal floor area, please refer to the Home Report.
This plan is for illustrative purposes only and should be used as such by a prospective buyer.