



38a Gibraltar Gardens, Dalkeith, EH22 1EF

Description

Bright and well-presented two bedroom upper villa with large private rear garden, driveway and timber garage. The property also benefits from gas central heating and double glazing.

The accommodation comprises:

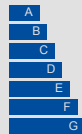
- Entrance hall
- Generous sitting room with two windows and cupboard housing gas central heating boiler
- Fitted kitchen with a range of cream base mounted units with laminate oak style units with inset stainless steel sink and appliances including electric cooker, fridge freezer and washing machine
- Good sized rear facing double bedroom
- Spacious front facing double bedroom with built-in wardrobes
- Modern tiled shower room with large shower enclosure, wash basin with vanity unit, WC and ladder towel rail



VIEWING DETAILS

Please call DMD Law 0131 316 4666
or check online for the up to date price
information and viewing arrangements.

WWW.DMDLAW.CO.UK



EPC RATING
C



LOOKING FOR MORE INFORMATION
ABOUT SELLING YOUR PROPERTY?

We offer free market appraisals on request



Outside and Gardens

There is a private driveway and timber garage. The private rear garden is mostly laid to lawn with a paved patio and small shed, which is included in the sale.

Location

Dalkeith is located approximately eight miles south east of Edinburgh city centre. The town is a popular choice for commuters as it is ideally placed for the city bypass which has links to the main motorway routes as well as the Forth Road Bridge, Edinburgh Business Park and Edinburgh Airport. It also benefits from the railway station nearby at Eskbank. The town has excellent amenities including shops, banking facilities, bars and restaurants. There is also a large supermarket on the edge of the town, with further retail outlets within easy reach at Fort Kinnaird and Straiton.

Extras

The fixed floor coverings, kitchen appliances and curtains included in the sale.

Council tax

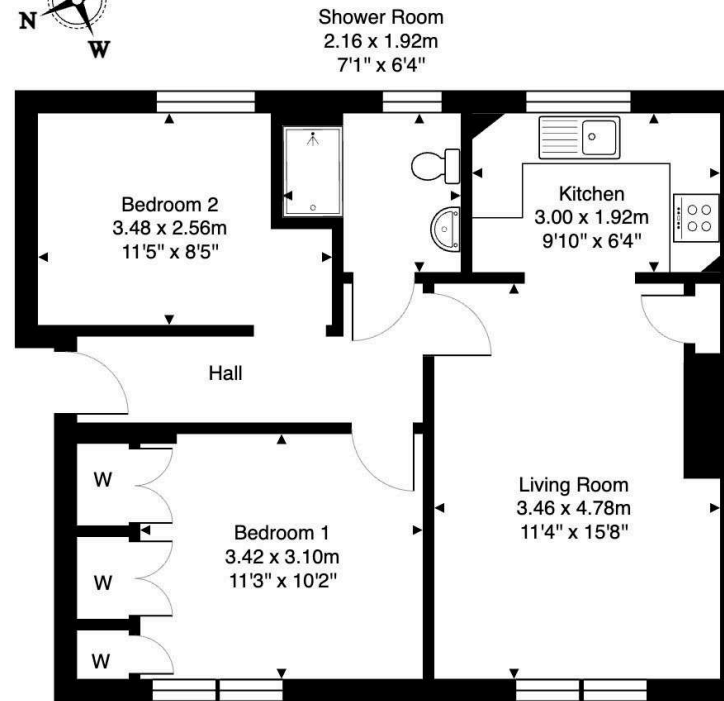
It is our understanding that this property is subject to Council Tax Band B, however, please check with the local authority.







38a Gibraltar Gardens, Dalkeith, EH22 1EF



First Floor

Total Area: 54.5 m² ... 586 ft²

All measurements are approximate and for display purposes only.

DMD | SOLICITORS &
ESTATE AGENTS

Offers can be submitted in writing, fax or email:

DMD Solicitors and Estate Agents
22 St. John's Road, Corstorphine, EH12 6NZ
DX 550 440 Edinburgh 44

F: 0131 539 7035

E: property@dmdpartnership.co.uk

T: 0131 316 4666

www.dmdlaw.co.uk

PrimeLocation.com

espc

zoopla

rightmove