



GILSON GRAY

LAW • PROPERTY • FINANCE

POST COTTAGE

10 Whitekirk Cottage, Whitekirk, East Lothian, EH42 1XS



Situated in the quaint village of Whitekirk in the heart of the East Lothian countryside, Post Cottage is a C-listed, traditional stone-built semi-detached cottage with beautifully presented interiors. The three-bedroom home offers two reception areas, a kitchen, a useable attic space, and a bathroom, as well as a delightful garden with a summerhouse, and a private driveway. Whitekirk offers a desirable semi-rural lifestyle with beautiful countryside on the doorstep, as well as amenities nearby including Whitekirk Hill Resort and the village hall, with more extensive facilities within easy reach, including shops, schools, and transport links.

Extras: Integrated kitchen appliances comprising an oven, hob, and extractor fan will be included in the sale. Please note, no warranties or guarantees shall be provided for the appliances.



FEATURES

- Semi-detached C-listed stone-built cottage in Whitekirk
- Beautifully presented, modern interiors
- Welcoming entrance hallway
- Spacious and elegant living room with fireplace
- Attractive, modern kitchen with adjoining dining area
- Three well-proportioned double bedrooms
- Large useable attic space
- Four-piece family bathroom
- Delightful mature garden with summerhouse
- Private, gated side driveway







"THIS TRADITIONAL STONE-BUILT COTTAGE OFFERS WELL-PRESENTED ACCOMMODATION AND A DELIGHTFUL GARDEN."





EPC RATING:



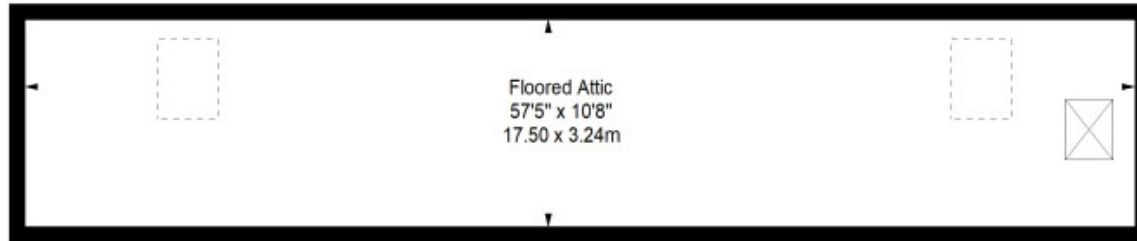
COUNCIL TAX BAND:



VIEWINGS: by appointment with Gilson Gray on 01620 893 481

Attic

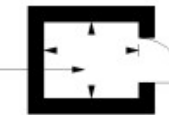
Approx. 56.9 sq. metres (612.5 sq. feet)



Shed

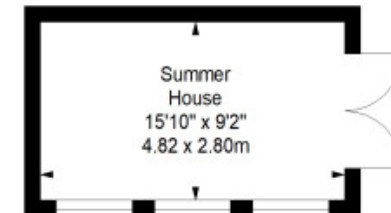
Approx. 1.8 sq. metres (19.4 sq. feet)

Shed
4'11" x 3'11"
1.50 x 1.20m



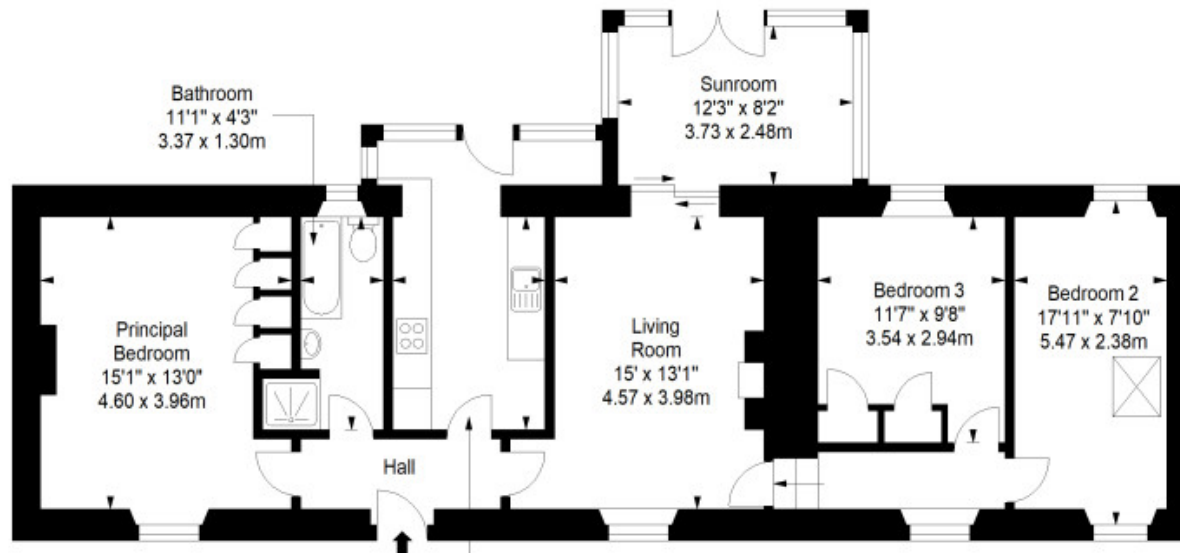
Summer House

Approx. 13.5 sq. metres (145.3 sq. feet)



Ground Floor

Approx. 94.4 sq. metres (1016.1 sq. feet)



Total area: approx. 166.6 sq. metres (1793.3 sq. feet)



GILSONGRAY.CO.UK

EDINBURGH

29 Rutland Square
EH1 2BW
0131 516 5366



GLASGOW

160 West George Street
G2 2HQ
0141 530 2021



EAST LOTHIAN

33 Westgate
EH39 4AG
01620 893 481



DUNDEE

2 West Marketgait
DD1 1QN
01382 201 000



BORDERS

01890 880 008



@gilsongrayprop gilson gray property gilson gray property @gilsongrayprop

rightmove Zoopla.co.uk OnTheMarket

These particulars were prepared on the basis of our own knowledge of the local area and, in respect of the property itself, information supplied to us by our clients; all reasonable steps were taken at the time of preparing these particulars to ensure that all details contained in them were accurate. All statements contained in the particulars are for information only and all parties should not rely upon them as statements or representations of fact. In particular, (a) descriptions, measurements and dimensions, which may be quoted in these particulars are approximate only and (b) all references to conditions, planning permission, services, usage, constructions, fixtures and fittings and movable items contained in the property are for guidance only. Our clients may instruct us to set a closing date for offers at short notice and therefore if you wish to pursue interest in this property, you should immediately instruct your solicitor to note interest with us. Our clients reserve the right to conclude a bargain for the sale of the above subjects or any part thereof ahead of a notified closing date and will not be obliged to accept either the highest or indeed any offer for the above subjects or any part thereof. All measurements have been taken using a sonic tape and cannot be regarded as guaranteed given the limitations of the device. Services and/or appliances referred to in these particulars have not been tested and no warranty is given that they are in full working order.