



boyd property

10 Dornoch Crescent
KIRKCALDY | KY2 6YE

10 Dornoch Crescent

KIRKCALDY | KY2 6YE

Description

Boyd Legal are delighted to present to the market light, spacious and well-presented 2-bedroom semi-detached bungalow, painted in neutral tones throughout. The property comprises: a entrance hall, a bright and spacious lounge, a modern fitted kitchen, two bedrooms both with fitted storage and a shower room. The property benefits from gas central heating and double glazing. Externally there are private gardens to the front and rear of the property, a large drive-way at the front that allows for off street parking and leads to the garage. This property will appeal to a variety of buyers and viewing is highly recommended.

Location

Kirkcaldy benefits from local shopping located at the town centre and Fife Retail park along with recreational facilities including, leisure centre, theatre, museum, beach, restaurants, Beveridge Park, fishing at Raith Lake and tennis club to name a few. The beach is a just a short drive from the property and is a good place to get away from it all and enjoy a great family day out. The Fife Coastal Path is about 10 minute walk from the beach and is a good place to go wildlife-watching. There are also views over the Firth of Forth. Leisurely, family walks can also be enjoyed at Ravensraig Park which is just a short drive away from the property where you can explore pleasant woodland that again connects to the Fife coastal path and you can discover Ravensraig castle and there is also a large outdoor children's play area and the vibrant Dysart Harbour is just a short stroll from the park, you can visit the historic harbourmasters house with café where you can find out more about the famous Fife Coastal Path. The town has its own mainline railway station making this an ideal location for the commuter. Schooling is also well represented with the following schools falling within the catchment area for the property; Dunnikier primary, Balwearie high school, St Marie's primary and St Andrew's high school. There are good links to the motorway system allowing Dundee, Glenrothes, Dunfermline and Edinburgh all to be reached within a comfortable drive. In addition to this there is a good local bus routes.

Extras

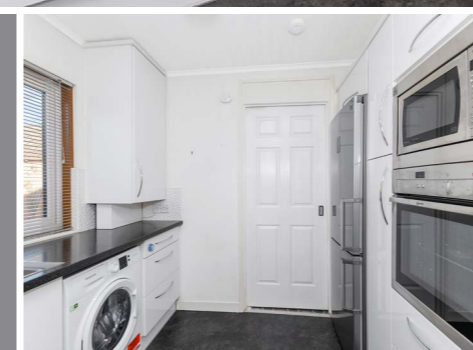
All fitted floor coverings and integrated appliances in the kitchen along with the free standing washing machine and fridge freezer.

Price & Viewing

For price and viewing information contact Agents.

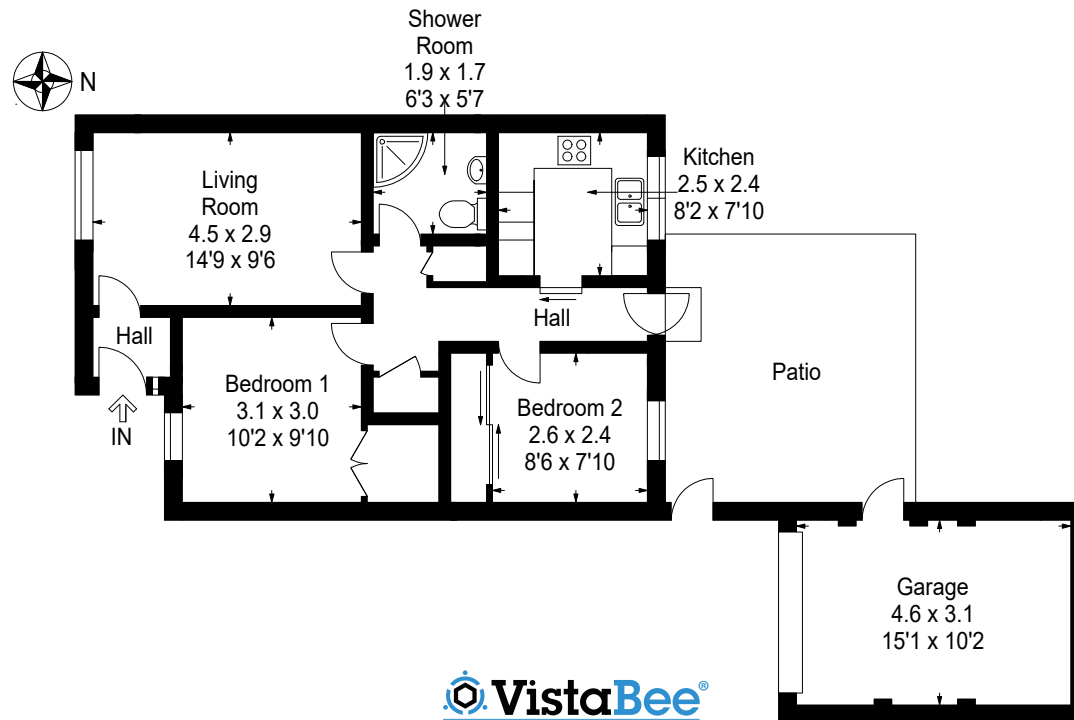


“ A light, spacious and well-presented 2-bedroom semi-detached bungalow, painted in neutral tones throughout. ”



Features

- Entrance hall
- Lounge
- Kitchen
- 2 Bedrooms
- 1 Bathroom
- Double glazing
- Gas central heating
- Private gardens to front and rear
- Driveway
- Garage



Approximate Internal Floor Area 645 Sq Ft / 60 SqM (Excluding Garage)

This plan is for layout guidance only and is not drawn to scale. Whilst every care is taken in the preparation of this plan, please check all dimension and shapes before making any decision reliant upon them. All room dimensions taken through cupboard/wardrobes to wall surface where possible or to surfaces indicated by arrow heads. (ID 110927)

© VistaBee 2024

Boyd Solicitors 21-22 Queensferry Street | Edinburgh | EH2 4RD

T: 0131 226 7464 F: 0131 226 7242

E: sales@boyd-property.com W: www.boysolicitors.com

1 Townsend Place | Kirkcaldy | KY1 1HB

T: 01592 858 466



Disclaimer: Interested parties are advised to request their own solicitor to note interest with us as soon as possible after viewing. The Seller shall not be bound to accept the highest or any offer. These particulars do not form part of any contract and the statements or plans contained herein are not warranted nor to scale. Approximate measurements have been taken by sonic device at the widest point. Services and appliances have not been tested for efficiency or safety and no warranty is given as to their compliance with any Regulations. Only offers using the Combined Standard Clauses will be considered. Offers received not using these clauses will be responded to by deletion of the non-standard Clause and replaced with the Combined Standard Clauses.