



GILSON GRAY

LAW • PROPERTY • FINANCE

31 DELTA DRIVE

Musselburgh, East Lothian, EH21 8HW



Occupying a generous corner plot within an established residential development of Musselburgh, this three-bedroom semi-detached house is presented in an immaculate, move-in condition with contemporary fixtures and fittings and a neutral colour palette. The home and its location, close to the town's excellent amenities including shops, schools, transport links, and green spaces, are sure to appeal to a wide range of buyers.

Extras: All fitted floor coverings, window coverings, light fittings, and integrated kitchen appliances will be included in the sale.



FEATURES

- Semi-detached house in Musselburgh
- Set on a generous corner plot
- Entrance vestibule with storage and hallway
- Southwest-facing living room
- Versatile conservatory
- Spacious dining kitchen with garden access
- Three double bedrooms with built-in storage
- Stylish bathroom with shower-over-bath
- Generous front and rear gardens
- Detached garage with gated private driveway
- Gas central heating system
- Double-glazed windows







"THIS THREE-BEDROOM
SEMI-DETACHED HOUSE IS
PRESENTED WITH
IMMACULATE,
CONTEMPORARY
INTERIORS."





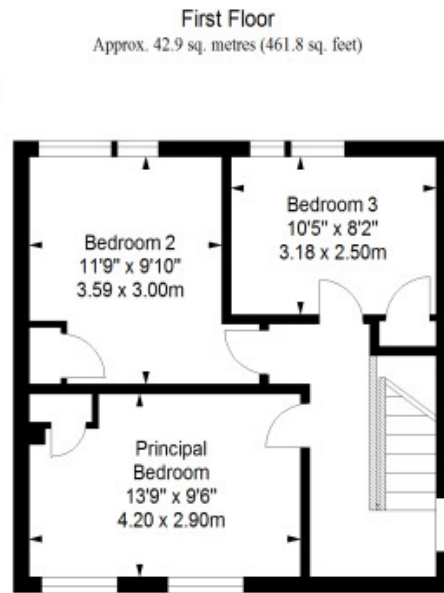
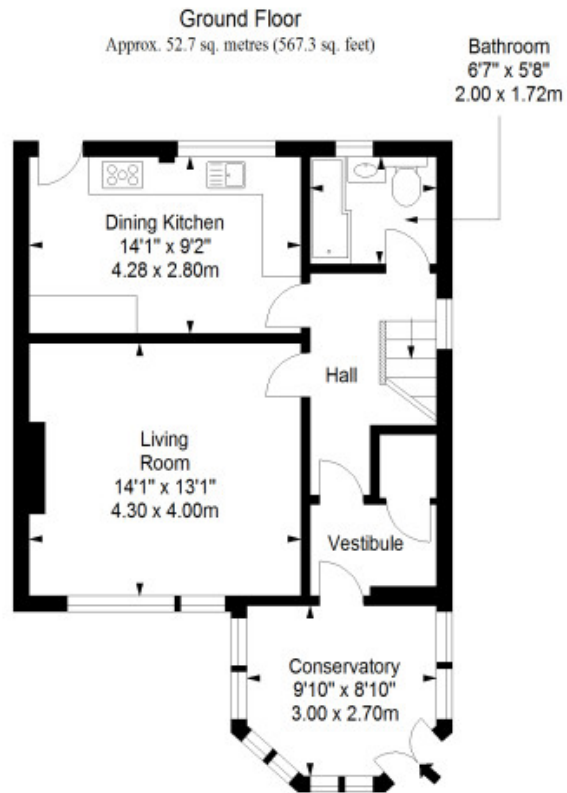
EPC RATING:



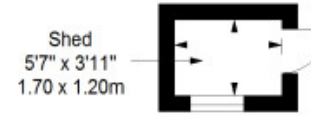
COUNCIL TAX BAND:



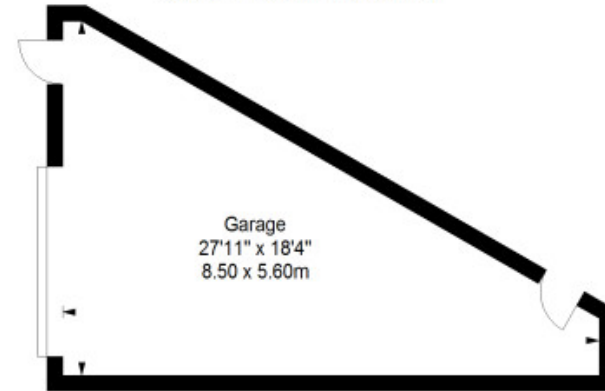
VIEWINGS: by appointment with Gilson Gray on 01620 893 481



Shed
Approx. 2.0 sq. metres (21.5 sq. feet)



Garage
Approx. 28.3 sq. metres (304.6 sq. feet)



Total area: approx. 125.9 sq. metres (1355.2 sq. feet)



GILSONGRAY.CO.UK

EDINBURGH

29 Rutland Square
EH1 2BW
0131 516 5366



GLASGOW

160 West George Street
G2 2HQ
0141 530 2021



EAST LOTHIAN

33 Westgate
EH39 4AG
01620 893 481



DUNDEE

2 West Marketgait
DD1 1QN
01382 201 000



BORDERS

01890 880 008



@gilsongrayprop gilson gray property gilson gray property @gilsongrayprop

These particulars were prepared on the basis of our own knowledge of the local area and, in respect of the property itself, information supplied to us by our clients; all reasonable steps were taken at the time of preparing these particulars to ensure that all details contained in them were accurate. All statements contained in the particulars are for information only and all parties should not rely upon them as statements or representations of fact. In particular, (a) descriptions, measurements and dimensions, which may be quoted in these particulars are approximate only and (b) all references to conditions, planning permission, services, usage, constructions, fixtures and fittings and movable items contained in the property are for guidance only. Our clients may instruct us to set a closing date for offers at short notice and therefore if you wish to pursue interest in this property, you should immediately instruct your solicitor to note interest with us. Our clients reserve the right to conclude a bargain for the sale of the above subjects or any part thereof ahead of a notified closing date and will not be obliged to accept either the highest or indeed any offer for the above subjects or any part thereof. All measurements have been taken using a sonic tape and cannot be regarded as guaranteed given the limitations of the device. Services and/or appliances referred to in these particulars have not been tested and no warranty is given that they are in full working order.