



# 11 STUART PARK,

CORSTORPHINE, EDINBURGH, EH12 8YD



1 PUBLIC



2 BED



1 BATH

0131 622 2626 | [property@vmh.co.uk](mailto:property@vmh.co.uk)



VMH SOLICITORS



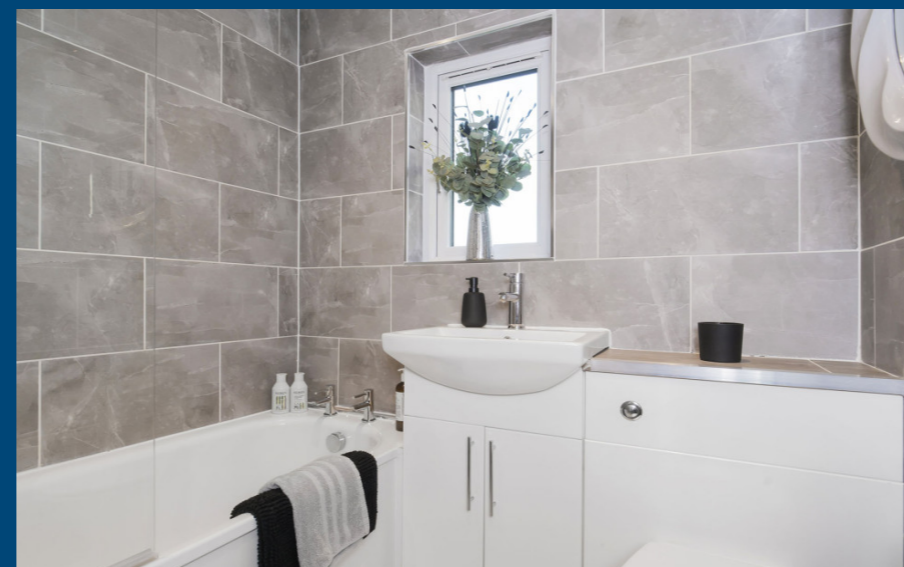
## 11 STUART PARK

Set on a no-through road, this end-terrace house has a peaceful setting in Corstorphine, which is sure to appeal to a wide demographic. The two-bedroom property is also brought to market in move-in condition, finished with a blank canvas of décor and quality fixtures and fittings, including a stylish kitchen and bathroom. Along with the attractive modern interiors, it further boasts a private garage and a fully-enclosed rear garden that has a south-facing aspect and an easy-upkeep design for relaxing and dining in the sun.

### Features

- End-terrace house with modern interiors
- Situated in popular Corstorphine
- Neutral interior décor throughout
- Quality fixtures and fittings
- Entrance hall with built-in storage
- Bright and airy living room
- Contemporary dining kitchen
- Two bedrooms with built-in wardrobes
- 3pc bathroom with overhead shower
- Low-maintenance rear garden
- Private garage for secure parking
- Gas central heating and double glazing

"A two-bedroom end-terrace house that is presented in move-in condition, with quality modern interiors throughout"



EPC Rating - C

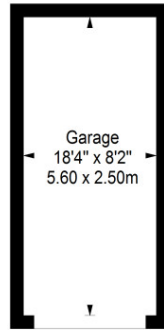
Home Report Value - £240,000

For up to date price & viewing information contact VMH Property or visit us online.

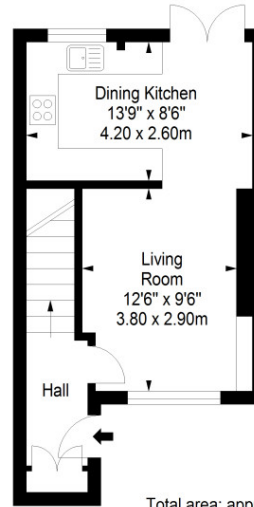


Extras: all fitted floor coverings, window blinds, light fittings, and integrated kitchen appliances to be included in the sale.

Garage  
Approx. 14.0 sq. metres (150.7 sq. feet)

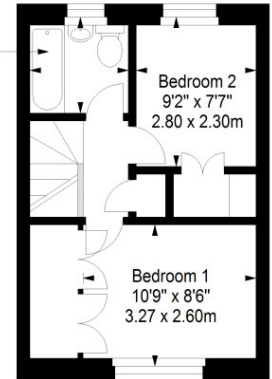


Ground Floor  
Approx. 30.0 sq. metres (322.9 sq. feet)



First Floor  
Approx. 26.5 sq. metres (285.3 sq. feet)

Bathroom  
6'1" x 5'11"  
1.85 x 1.80m



Total area: approx. 70.5 sq. metres (758.9 sq. feet)



VMH SOLICITORS

WWW.VMH.CO.UK

Registered Office: 8 Sibbald Walk, Edinburgh, EH8 8FT

T: 0131 622 2626 F: 0131 622 26267 E: [property@vmh.co.uk](mailto:property@vmh.co.uk)

DX: 552210, Edinburgh 68



CHARTERED FIRM

The dimensions provided are for illustration purposes only; detailed measurements should be taken personally. No documentation will be exhibited in respect of the compliance or otherwise of replacement windows. Although every attempt has been taken to ensure accuracy, the details within the brochure are not guaranteed or warranted and will not form part of any future contract to buy.