



# 36/3 HUTCHISON ROAD

CHESSER, EDINBURGH, EH14 1PQ



1 PUBLIC



2 BED



1 BATH

0131 622 2626 | [property@vmh.co.uk](mailto:property@vmh.co.uk)



VMH SOLICITORS





# 36/3

## HUTCHISON ROAD

Situated in popular Chesser, a short commute from the city centre, this appealing first-floor flat benefits from attractive modern décor, shared access to a delightful garden, and handy unrestricted on-street parking. The well-proportioned interiors include a bright and spacious reception room, a sunny modern kitchen, a bathroom, and two double bedrooms.

### Features

- Well-connected suburban location
- Attractive modern interiors
- First-floor flat in established development
- Secure entry system
- Entrance hall with storage
- Bright living/dining room with living-flame fire and storage
- Modern kitchen with a sunny aspect
- Two spacious double bedrooms (one with storage)
- Bathroom with a shower-over-bath
- Neatly-kept communal garden
- Unrestricted on-street parking
- Gas central heating and double glazing



EPC Rating - C

Home Report Value - £170,000

For up to date price & viewing information contact VMH Property or visit us online.

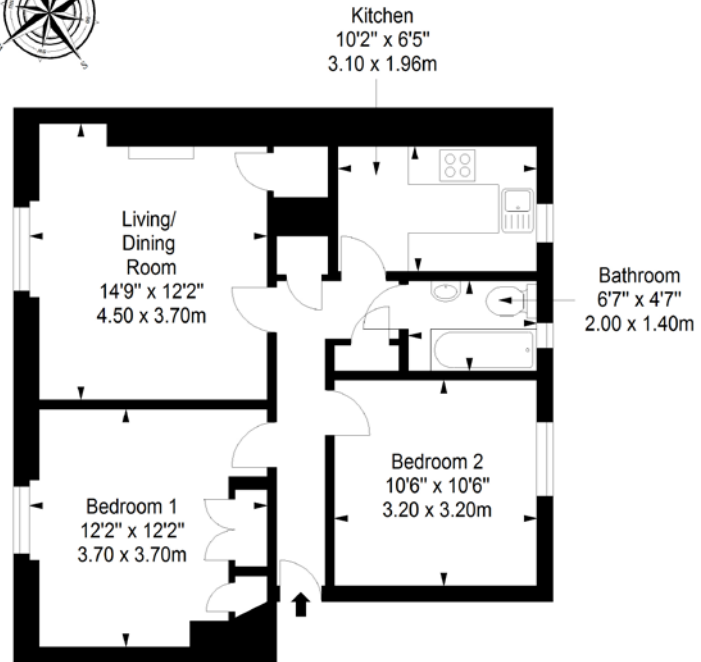


Extras: All fitted floor and window coverings and light fittings are included in the sale.



### First Floor

Approx. 58.1 sq. metres (625.4 sq. feet)



Total area: approx. 58.1 sq. metres (625.4 sq. feet)



VMH SOLICITORS

[WWW.VMH.CO.UK](http://WWW.VMH.CO.UK)

Registered Office: 8 Sibbald Walk, Edinburgh, EH8 8FT

T: 0131 622 2626 F: 0131 622 26267 E: [property@vmh.co.uk](mailto:property@vmh.co.uk)

DX: 552210, Edinburgh 68



CHARTERED FIRM

The dimensions provided are for illustration purposes only; detailed measurements should be taken personally. No documentation will be exhibited in respect of the compliance or otherwise of replacement windows. Although every attempt has been taken to ensure accuracy, the details within the brochure are not guaranteed or warranted and will not form part of any future contract to buy.