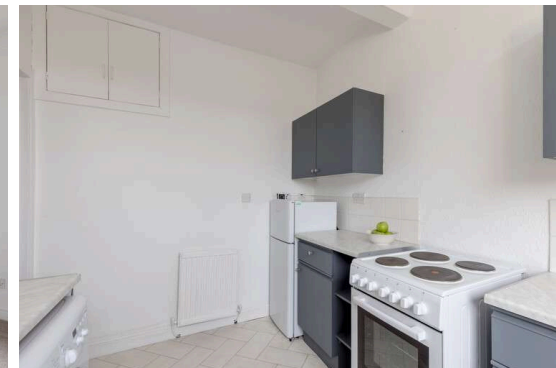


**14/5 Hutchison Medway
Edinburgh EH14 1QQ**

Offers Over £160,000

- Large living/dining room with useful storage cupboard
- Kitchen fitted with a range of floor and wall mounted units, electric cooker and white goods included in sale
- Two double bedrooms with master featuring built in wardrobes
- Bathroom with three-piece suite and electric shower over bath
- Hallway with useful storage cupboard
- Gas central heating and double glazing throughout
- Allocated garden area and communal drying green
- Free on-street parking



Second Floor Flat

Blair Cadell are delighted to offer to market this two bed flat in Chesser. With superb local amenities and great transport links to the city centre and beyond the property would be ideal for the young professional or buy to let investor.

The accomodation comprises of an entrance hallway with a large storage cupboard leading through to a generous living/dining room perfect for relaxing with friends and family and has a useful storage cupboard. Kitchen with a range of floor and wall mounted units, electric hob and oven and white goods which are included in the sale. There are two double bedrooms with the master featuring large fitted wardrobes with furniture available by separate negotiation. Bathroom with a three-piece suite and an electric shower over the bath. Gas central heating and double glazing throughout for maximum efficiency. Allocated garden space along with a communal drying green and free on-street parking.*No warranties given for systems or appliances*

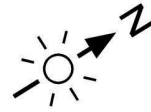
Chesser is a popular residential area which is situated to the south west of the city centre within a ten minute drive of the bypass which leads to the airport and the central belt motorway network. The city centre can be easily reached by regular public transport services such as the bus, tram or train all of which are accessible very close by. Shopping facilities include the Edinburgh West Retail Park, 24hr ASDA, Lidl and a Sainsbury's superstore at Inglis Green. Recreational facilities include Nuffield and Pure gym as well as Fountain Park, the Corn Exchange Village and Murrayfield Stadium which are within walking distance. Also, nearby and only a short walk away are a variety of outdoor facilities including the Water of Leith Walkway, the Union Canal and Saughton Park & Gardens.

Viewing by appointment on 0131 337 1800

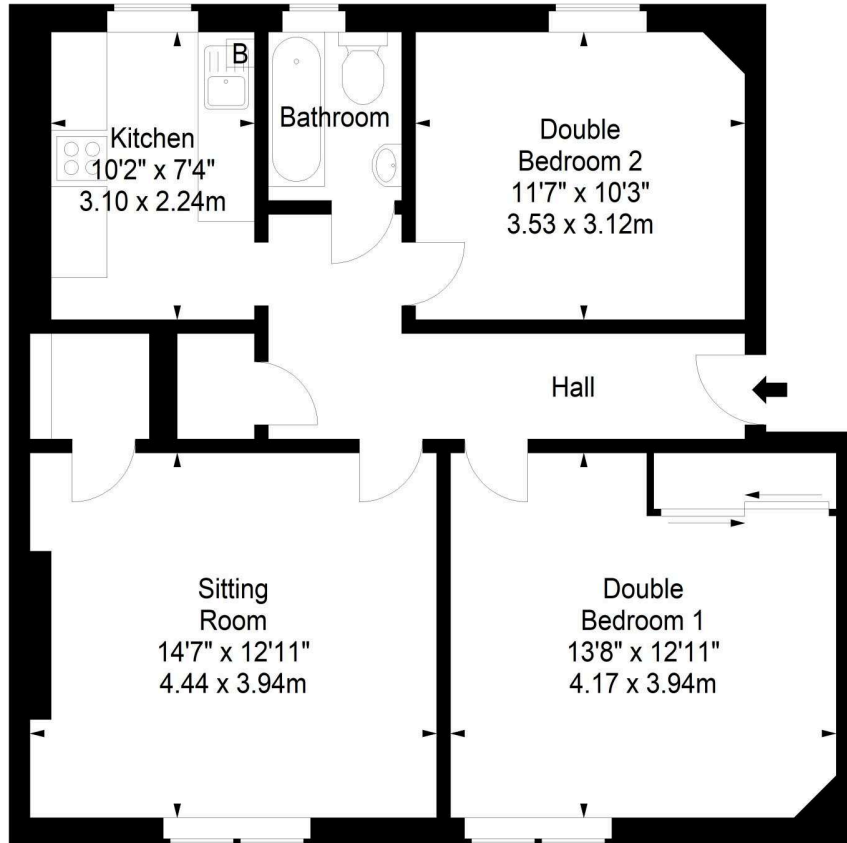




**Hutchison Medway,
Edinburgh, EH14 1QQ**



Approx. Gross Internal Area
748 Sq Ft - 69.49 Sq M
For identification only. Not to scale.
© SquareFoot 2023



Second Floor



Property Centre:
1 Harrison Gardens
Edinburgh EH11 3NA
Tel: 0131 337 1800
Fax: 0131 337 1118

DX ED 92, Edinburgh
E-mail: property@blaircadell.com
www.blaircadell.com

