



# 14/11 BRIDGE STREET

MUSSELBURGH, EAST LoTHIAN, EH21 6AA



1 PUBLIC



3 BED



2 BATH

0131 622 2626 | [property@vmh.co.uk](mailto:property@vmh.co.uk)



VMH SOLICITORS





# 14/11

## BRIDGE STREET

Offering wonderfully bright and spacious accommodation over two floors (second and third), this duplex apartment forms part of an established development in Musselburgh and accommodates three bedrooms, a large living room with a balcony, a dining kitchen, two bathrooms, and a separate WC. The development is set within well-maintained shared grounds and offers private residents' parking.

### Features

- Duplex apartment in Musselburgh
- Arranged over the second & third floors
- Secure shared entrance
- Large living room with balcony
- Attractive dining kitchen
- Three double bedrooms with storage
- One en-suite bathroom
- Separate bathroom
- Two-piece WC and utility room
- Well-maintained shared gardens
- Private residents' parking
- Gas central heating and double glazing



“...Duplex apartment in Musselburgh arranged over the second & third floors...”





“...Three double bedrooms with storage and two bathrooms...”





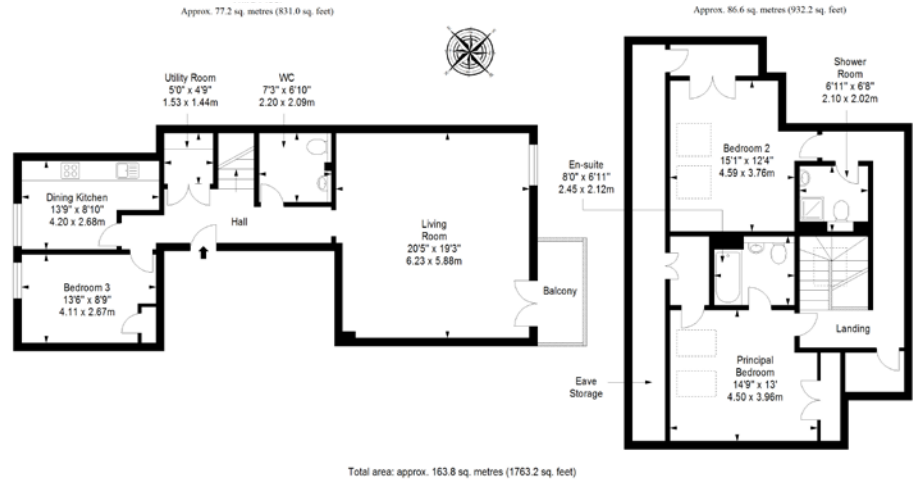
EPC Rating - B

Home Report Value - £325,000

For up to date price & viewing information contact VMH Property or visit us online.



Extras: all fitted floor coverings, window coverings, light fittings, and integrated kitchen appliances will be included in the sale.



VMH SOLICITORS

[WWW.VMH.CO.UK](http://WWW.VMH.CO.UK)

Registered Office: 8 Sibbald Walk, Edinburgh, EH8 8FT

T: 0131 622 2626 F: 0131 622 26267 E: [property@vmh.co.uk](mailto:property@vmh.co.uk)

DX: 552210, Edinburgh 68



The dimensions provided are for illustration purposes only; detailed measurements should be taken personally. No documentation will be exhibited in respect of the compliance or otherwise of replacement windows. Although every attempt has been taken to ensure accuracy, the details within the brochure are not guaranteed or warranted and will not form part of any future contract to buy.