



18/6 Calder View, Sighthill, Edinburgh, EH11 4HX

Description

Bright and well proportioned three bedroom second floor flat in good condition throughout situated in the Sighthill area close to Edinburgh Napier University, Heriot Watt University and Edinburgh College, making it an ideal a buy to let. Given the fantastic transport links and amenities nearby, it would also make an excellent starter flat. The property also benefits from double glazing and gas central heating.

The accommodation comprises:

- Entrance hall with multiple cupboards including a deep walk-in storage cupboard
- Generously proportioned living room with south facing aspect
- Fitted kitchen with a range of wall and base mounted units with laminate worktops with inset stainless steel sink and appliances including a gas cooker with extractor hood, washing machine, dishwasher and fridge freezer
- Three good sized bedrooms, two of which have built-in wardrobes
- Tiled bathroom fitted with a bath with electric shower over, WC, pedestal wash hand basin and heated towel rail



VIEWING DETAILS

Please call DMD Law 0131 316 4666 or check online for the up to date price information and viewing arrangements.

WWW.DMDLAW.CO.UK



EPC RATING
C



LOOKING FOR MORE INFORMATION
ABOUT SELLING YOUR PROPERTY?

We offer free market appraisals on request



Outside and Gardens

Communal garden grounds surround the property and there is a shared drying area and an unallocated car park.

Location

Sighthill is situated approximately four miles west of Edinburgh's City Centre. Local shopping facilities include the Hermiston Gait retail park, the Gyle Shopping Centre, Westside Plaza and a Sainsbury's supermarket at Longstone. It is conveniently located for Heriot Watt University, Napier University and Edinburgh College. Schooling is available locally from nursery to secondary level. Leisure facilities nearby include a swimming pool and gym. A frequent bus service operates from nearby to the City Centre and from a commuting perspective. The property is conveniently positioned for access to the City Bypass and the links to the motorway network. The Union Canal is nearby and has a cycle route to the City Centre.

Extras

The fixed floor coverings, light fittings and kitchen appliances are included in the sale.

Council tax

It is our understanding that this property is subject to Council Tax Band A, however, please check with the local authority.





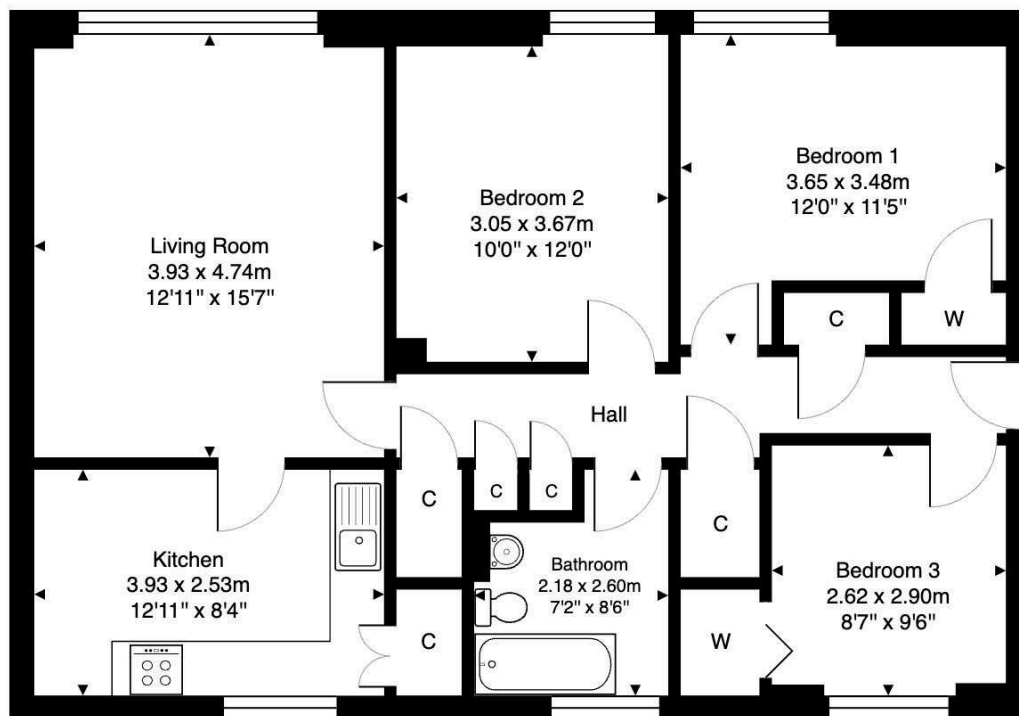




18/6 Calder View, Edinburgh, EH11 4HX

Total Area: 80.9 m² ... 871 ft²

All measurements are approximate and for display purposes only



Second Floor

DMD | SOLICITORS &
ESTATE AGENTS

Offers can be submitted in writing, fax or email:

DMD Solicitors and Estate Agents
22 St. John's Road, Corstorphine, EH12 6NZ
DX 550 440 Edinburgh 44

F: 0131 539 7035

E: property@dmdpartnership.co.uk

T: 0131 316 4666

www.dmdlaw.co.uk

PrimeLocation.com

espc

zoopla

rightmove