



10 VENTUREFAIR DRIVE

GILMERTON, EDINBURGH, EH17 8WD



2 PUBLIC



4 BED



3 BATH

0131 622 2626 | property@vmh.co.uk



VMH SOLICITORS



10

VENTUREFAIR DRIVE

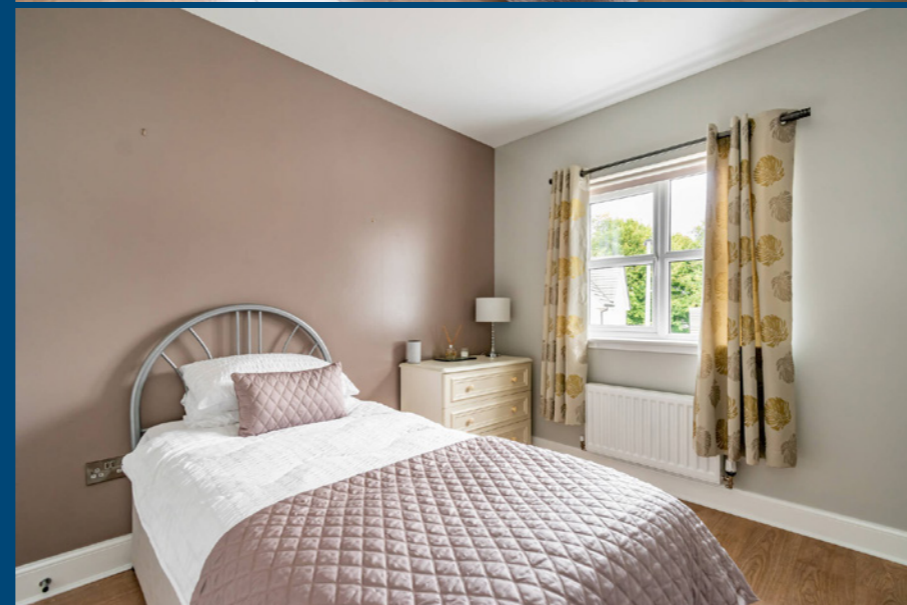
This well-presented detached house offers spacious family accommodation in move in condition. It offers 4 bedrooms (2 with ensuite), living room, kitchen diner, utility room and family bathroom. This modern home further benefits from gas central heating, double glazing, a multicar driveway and integrated garage in addition to an enclosed south-facing rear garden with patio.

Features

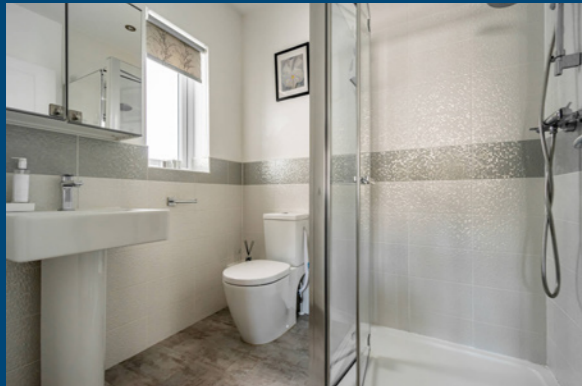
- Modern detached family home in Gilmerton
- Attractive modern interior
- Welcoming Hallway
- Bay windowed Living Room
- Kitchen/Dining Room
- Utility Room and W.C.
- Four Bedrooms (Two with En-Suite Shower Rooms)
- Family Bathroom
- Integrated Garage & 2 Car Driveway
- Private Front & Rear Gardens
- Gas Central Heating
- Double Glazing



"...Modern detached family home in Gilmerton with attractive modern interiors..."



“...Four bedrooms, three bathrooms and private front & rear gardens...”



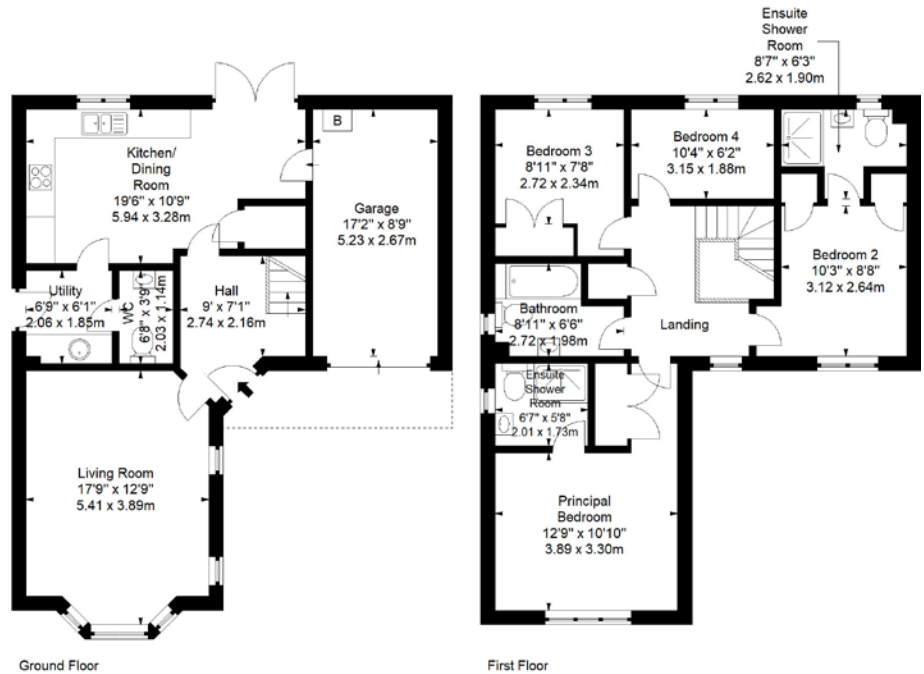
EPC Rating - C

Home Report Value - £375,000

For up to date price & viewing information contact VMH Property or visit us online.



Extras - The fitted carpets and floor coverings, oven, hob, hood, fridge-freezer, washing machine, dishwasher and light shades (excluding the light fitting in the living room) are to be included in the sale.



VMH SOLICITORS

WWW.VMH.CO.UK

Registered Office: 8 Sibbald Walk, Edinburgh, EH8 8FT

T: 0131 622 2626 F: 0131 622 26267 E: property@vmh.co.uk

DX: 552210, Edinburgh 68



The dimensions provided are for illustration purposes only; detailed measurements should be taken personally. No documentation will be exhibited in respect of the compliance or otherwise of replacement windows. Although every attempt has been taken to ensure accuracy, the details within the brochure are not guaranteed or warranted and will not form part of any future contract to buy.