

29/16 Stewart Terrace Edinburgh EH11 1UN

Offers Over £145,000

- Hallway with useful storage area
- Generous living/dining room
- Kitchen fitted with a range of floor and wall mounted units, induction hob and electric oven and integrated appliances
- Double bedroom
- Bathroom with three-piece suite and mains shower over the bath with rainwater shower head
- Gas central heating and double glazing
- Communal garden to rear
- Free on-street parking



Flat

Blair Cadell are delighted to bring to market this lovely one bed tenement flat. The property is in turn key condition and ideally placed for swift access to town and would be ideal for a first time buyer or buy to let investment.

The property comprises a hallway with a useful storage area, a large living/dining room that is perfectly laid out for evening relaxing and has a been cleverly laid out with an area for a bed as well. The kitchen has as range of floor and wall mounted units, induction hob and electric oven and integrated appliances which are included in the sale. There is a generous double bedroom situated to the rear of the building away from traffic noise keeping it lovely and quiet. Bathroom fitted with a three-piece suite and mains shower over the bath with a fantastic rainwater shower head. Gas central heating and double glazing throughout the property for maximum efficiency. A well kept communal garden and free on-street parking.

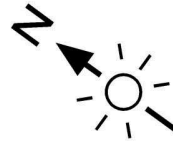
Gorgie is a popular location just to the south-west of the city centre which can be easily accessed by an excellent bus service that runs close by. Haymarket Station is also a short bus journey away offering superb links further afield. Locally there is a wide selection of shopping facilities including a Sainsbury's superstore, Aldi store and the Edinburgh West Retail Park. There are also a range of superb recreational facilities including the Corn Exchange Village, Dalry Swim Centre, Fountain Park Leisure Complex and a number of popular bars and restaurants offering plenty of choice for evening entertainment

Viewing by appointment on 0131 337 1800

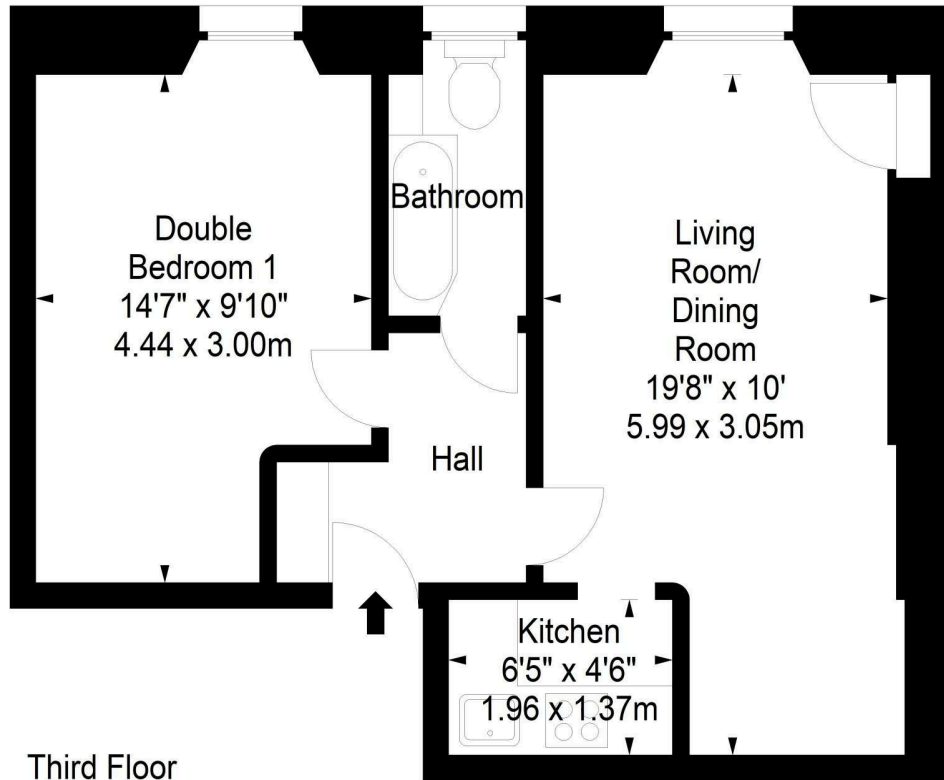




**Stewart Terrace,
Edinburgh,
Midlothian, EH11 1UN**



Approx. Gross Internal Area
452 Sq Ft - 41.99 Sq M
For identification only. Not to scale.
© SquareFoot 2023



Property Centre:
1 Harrison Gardens
Edinburgh EH11 3NA
Tel: 0131 337 1800
Fax: 0131 337 1118

DX ED 92, Edinburgh
E-mail: property@blaircadell.com
www.blaircadell.com

