



10 East Lorimer Place

Cockenzie, Prestonpans, EH32 0JD

We sell homes, not just houses





Summary

Situated in the historic town of Cockenzie, this traditional mid-terrace house offers a relaxed coastal lifestyle, just a short walk from the harbour and rugged coastline. The three-bedroom property features spacious accommodation, including a large living room and well-appointed dining kitchen. It also has two shower rooms, secure parking, and a southwest-facing rear garden. Furthermore, the property is presented in light neutral hues allowing new buyers to easily apply their own style.

Extras: all fitted floor coverings, window blinds, light fittings, an integrated oven and gas hob, a freestanding fridge/freezer, and a washing machine to be included in the sale.

Features

- Spacious mid-terrace house
- In the Cockenzie conservation area
- Near amenities, schools and transport links
- Vestibule and hall with storage
- Southwest-facing living room
- Large dining kitchen
- Landing with generous cupboard
- Three double bedrooms (one with wardrobe)
- Two shower rooms with 3pc suites
- Access to eaves storage
- Fully-enclosed rear garden
- Private garage with storage space
- Gas central heating and double glazing
- EPC Rating - E





“Spacious mid-terrace house with
three double bedrooms
(one with wardrobe)”





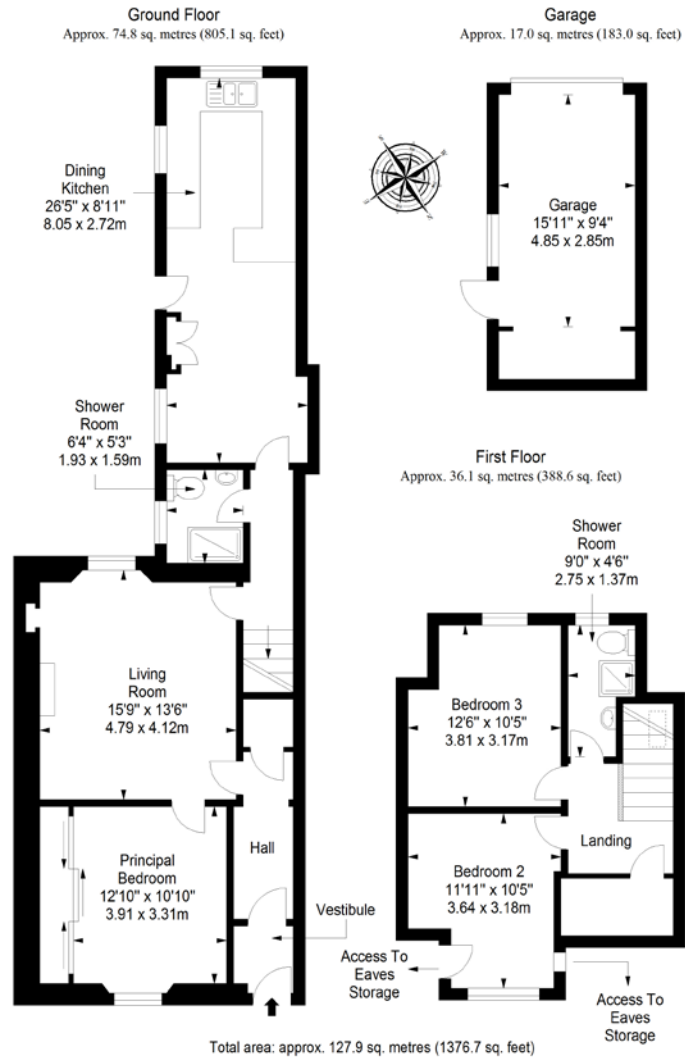


“Two shower rooms with 3pc suites,
private garage with storage space and
fully-enclosed rear garden”





Floorplan



LEGAL OFFICE: 89-91 Morrison Street, Edinburgh, EH3 8BU
0131 337 7771
www.clancys-solicitors.co.uk

DISCLAIMER
These particulars are intended to give a fair description of the property but their accuracy cannot be guaranteed, and they do not constitute or form part of an offer of contract. Intending purchasers must rely on their own inspection of the property. None of the above appliances/services have been tested by ourselves. We recommend purchasers arrange for a qualified person to check all appliances/services before legal commitment. Whilst every attempt has been made to ensure the accuracy of the floorplan contained here, measurements of doors, windows, rooms and any other items are approximate and no responsibility is taken for any error, omission, or misstatement. This plan is for illustrative purposes only and should be used as such by any prospective purchaser.

