



GILSON GRAY

LAW • PROPERTY • FINANCE

3 MAINS CHURCH FLATS

Claverhouse Road, Dundee, DD4 9DL



Presented with stylish, contemporary interiors, this duplex flat is arranged over the ground and first floors of a converted church in Dundee and offers a living room, a mezzanine-level dining kitchen, two double bedrooms with built-in wardrobes, and a shower room, plus access to a communal garden and private residents' parking. The flat is ideally located for swift access to all the city has to offer.

Extras: Integrated appliances comprising an oven and hob will be included in the sale. Please note, no warranties or guarantees shall be provided for the appliances.

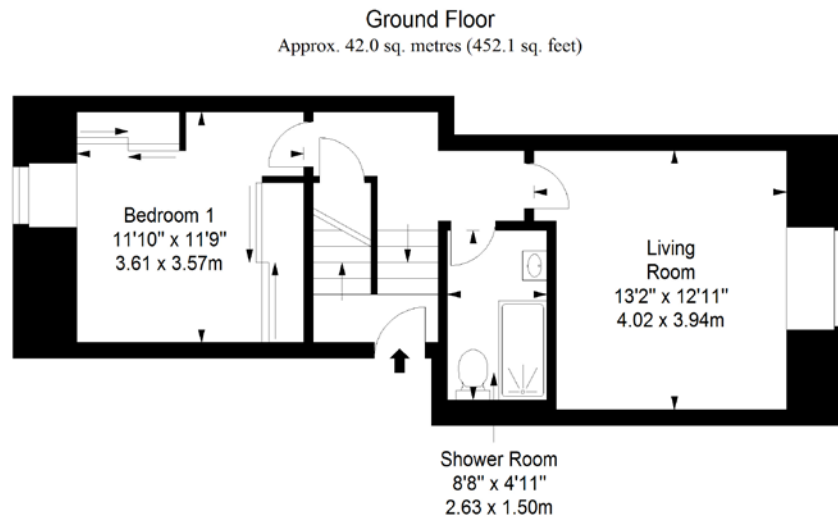
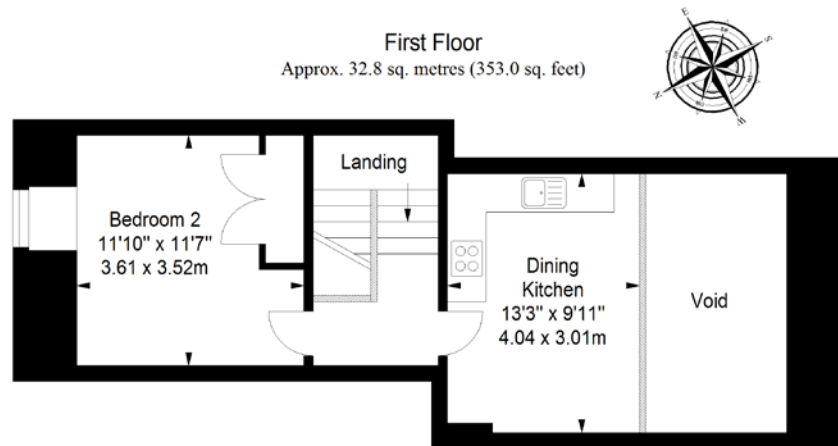
FEATURES

- Duplex flat in Dundee
- Arranged over the ground and first floors
- Forming part of a converted church
- Secure shared entrance
- Hallway with storage
- Southwest-facing living room
- Mezzanine-level dining kitchen
- Two double bedrooms with storage
- Contemporary shower room
- Access to communal garden
- Private residents' parking
- EPC Rating - C
- Council Tax Band - D



“DUPLEX FLAT IN DUNDEE
FORMING PART OF A
CONVERTED CHURCH WITH
A SOUTHWEST-FACING
LIVING ROOM & TWO
DOUBLE BEDROOMS”





Total area: approx. 74.8 sq. metres (805.1 sq. feet)

EDINBURGH

29 Rutland Square
EH1 2BW
0131 516 5366



GLASGOW

160 West George Street
G2 2HQ
0141 530 2021



EAST LOTHIAN

33 Westgate
EH39 4AG
01620 893 481



DUNDEE

2 West Marketgait
DD1 1QN
01382 201 000



BORDERS

01890 880 008

