



Plot of Ground, Seaview Crescent
Joppa, EH15 2HE



Thinking of moving home? We can provide a **FREE** no obligation pre-sale valuation of your property.
We can offer: Estate Agency, Conveyancing and introduce Mortgage & Letting Advisors.

LOCATION

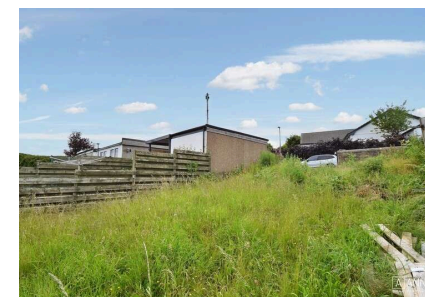
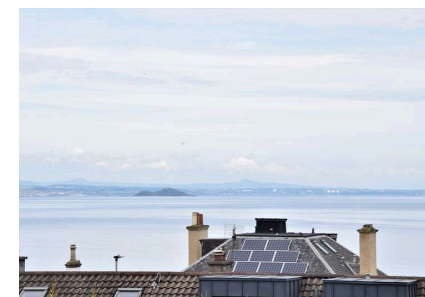
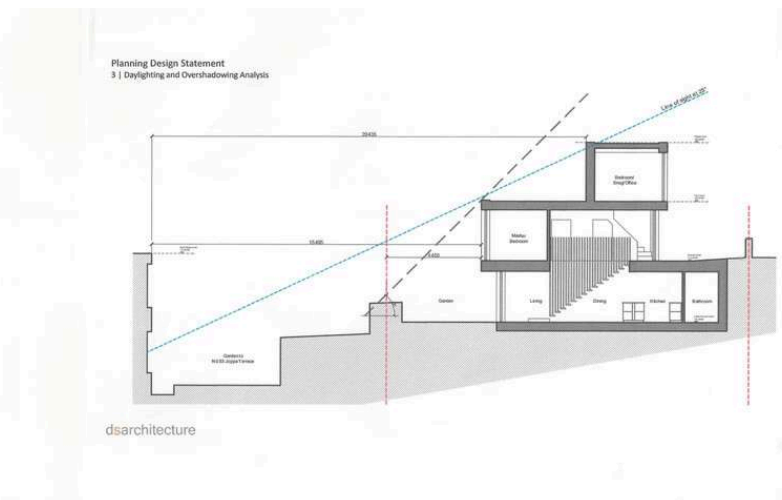
Joppa is an extremely popular and vibrant residential area located to the east of the city centre. Within close proximity, Portobello High Street has a varied range of services and shops such as: Aldi, Sainsbury's Local, Scotmid with Post Office, Bank of Scotland and a selection of eateries. Within easy reach there is an Asda Superstore and a wide selection of shopping at Fort Kinnaird Retail Park. The area is well served by regular bus routes into the city and to towns and villages down the East Coast. Brunstane railway station connects to the city centre and beyond. The link to the city bypass gives good access to the A1, Edinburgh Airport and the motorway network. Locally, there is a good range of nursery, primary, and secondary schools. At further education level are the Edinburgh College (Jewel & Esk Campus) and Queen Margaret University campus. Leisure and recreational facilities are provided by Duddingston 18 hole and Portobello 9 hole golf courses, Portobello Swim Centre, Portobello Sailing & Kayak Club; Power League 5-a-side pitches and Portobello Rugby Club. Fitness clubs operate at Bannatynes, King's Manor Hotel and Edinburgh College. Portobello Promenade and beach are well served by beach front bistros and pubs complementing those on the nearby High Street. Sea swimming has become an increasingly popular year round activity.

DESCRIPTION

A rare opportunity to purchase a plot with full planning permission in the highly regarded district of Joppa.

The plot is available with full planning permission for a stunning residential dwelling. The proposed property is a three-storey, three-bed, two-bath, house with open plan living, enjoying elevated views. With the precedent of planning consent established, the plot would also lend itself to a re-design to suit your own particular circumstances.

Planning reference number: 21/05017/FUL



A ANNAN
SOLICITORS & ESTATE AGENTS

266-268 Portobello High Street,
Edinburgh, EH15 2AT
T: 0131 669 2121
Fraser Falconer - 07825 951348
admin@annan.co.uk



zoopla
rightmove

Disclaimer - These particulars do not form part of any contract or missive to be entered into with a prospective purchaser. All statements and measurements contained herein are believed to be correct but are not warranted or guaranteed. Intending purchasers must satisfy themselves as to the accuracy. No guarantee is given as to the working conditions of any appliance mentioned in these particulars. The photographs shown solely belong to Annan Solicitors and Estate Agents.

Annan Solicitors and Estate Agents is a wholly-owned subsidiary of Elmslies Ltd SC 335565