



48 ROSEMOUNT BUILDINGS

FOUNTAINBRIDGE, EDINBURGH, EH3 8DD



| PUBLIC



| BED



| BATH

0131 622 2626 | property@vmh.co.uk



VMH SOLICITORS



48

ROSEMOUNT BUILDINGS

Set within a listed courtyard development in Edinburgh's West End conservation area, this main-door flat enjoys a charming setting just a short walk from Haymarket train station, with a wide range of amenities and attractions also accessible by foot. The neutrally decorated flat includes a living room, a southwest-facing dining kitchen, a spacious double bedroom, excellent storage, and a bathroom with a shower-over-bath. Access to expansive communal gardens and residents' parking is also on offer.

Features

- Desirable West End location
- B-Listed Victorian development
- Main-door flat with neutral interiors
- Entrance hall
- Bright living room
- Sunny kitchen with dining area
- One double bedroom
- Bathroom with shower-over-bath
- Excellent built-in storage
- Delightful communal gardens
- Residents' parking
- GCH



EPC Rating - C

Home Report Value - £230,000

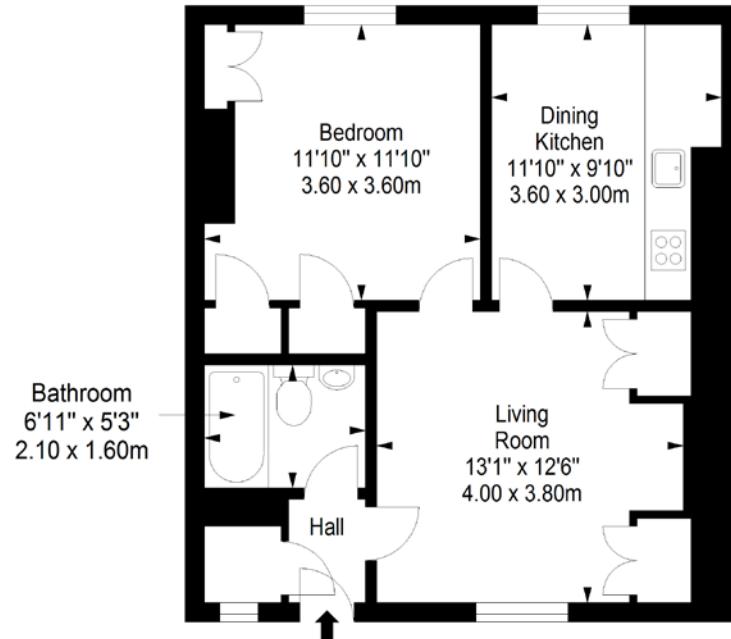
For up to date price & viewing information contact VMH Property or visit us online.



Extras: To include all fitted carpets and fitted floor coverings, window coverings, light fittings and kitchen appliances. Other items may also be available by separate negotiation



Ground Floor
Approx. 48.4 sq. metres (521.0 sq. feet)



Total area: approx. 48.4 sq. metres (521.0 sq. feet)



VMH SOLICITORS

WWW.VMH.CO.UK

Registered Office: 8 Sibbald Walk, Edinburgh, EH8 8FT

T: 0131 622 2626 F: 0131 622 26267 E: property@vmh.co.uk

DX: 552210, Edinburgh 68



CHARTERED FIRM

The dimensions provided are for illustration purposes only; detailed measurements should be taken personally. No documentation will be exhibited in respect of the compliance or otherwise of replacement windows. Although every attempt has been taken to ensure accuracy, the details within the brochure are not guaranteed or warranted and will not form part of any future contract to buy.