



GILSON GRAY

LAW • PROPERTY • FINANCE

37 ASHLUDIE HOUSE

Monifieth, Dundee, DD5 4RB



Part of Ashludie House, a stunning, B-listed, Jacobean-style mansion (1866), this first-floor apartment is an exclusive two-bedroom property, which is finished to outstanding standards with high-quality modern interiors and contemporary fixtures and fittings. The south-facing home also boasts an idyllic cul-de-sac setting in Monifieth, with close proximity to open countryside and the coast. Furthermore, it is less than twenty minutes by car from Dundee city centre.

Extras: all fitted floor coverings, window blinds, light fixtures, and integrated kitchen appliances to be included in the sale. Please note, no warranties or guarantees shall be provided in relation to any of the services, moveables, and/or appliances included in the price, as these items are to be left in a sold as seen condition.



FEATURES

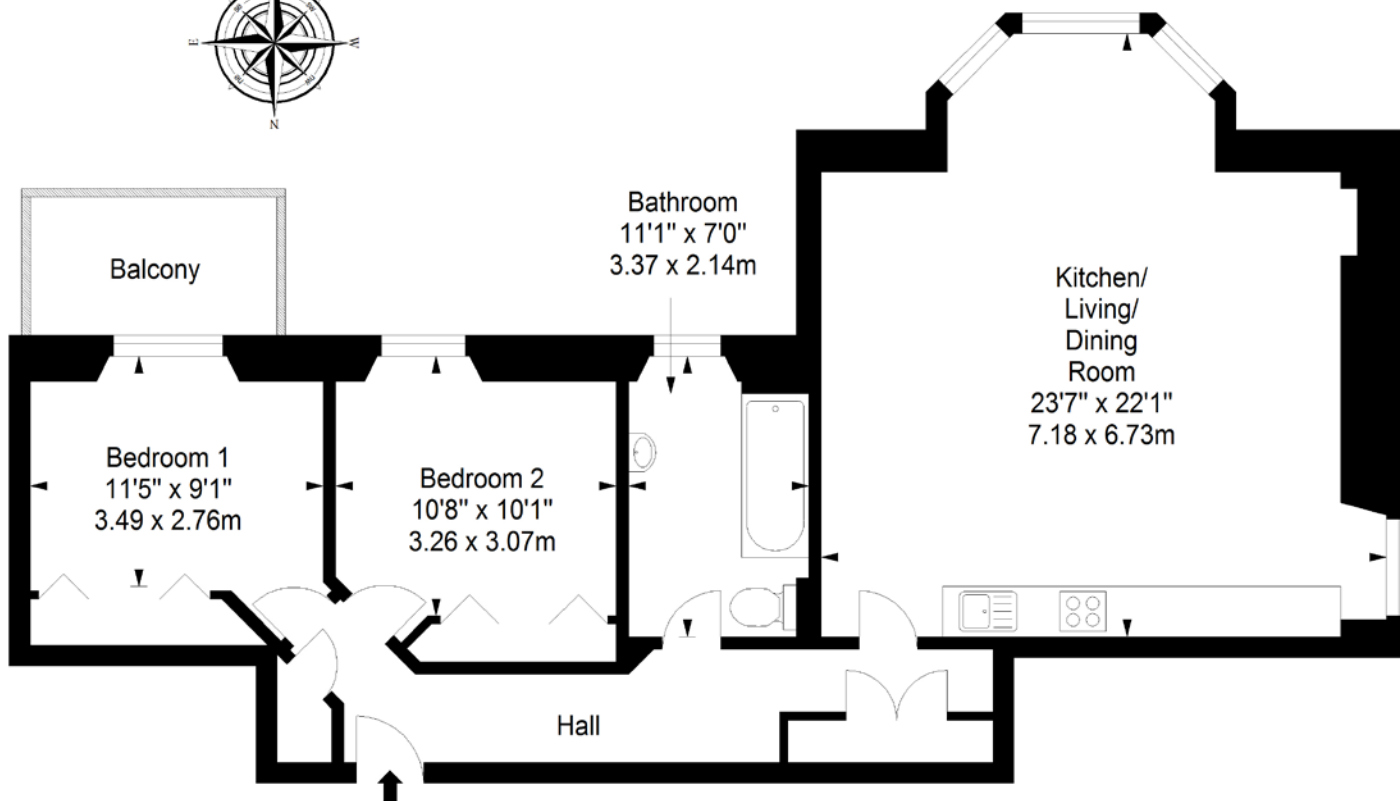
- An impressive first-floor apartment
- Part of the B-listed Ashludie House (1866)
- In the coastal town of Monifieth
- Communal entry with stained-glass windows
- Inviting hall with two cupboards
- Open-plan kitchen/living/dining room with a bay window & additional glazing
- Stylish kitchen with integrated appliances
- Two double bedrooms with wardrobes
- High-spec bathroom with overhead shower
- Neatly tended communal garden
- Private residents' parking
- EPC Rating - B
- Council Tax Band - C



"AN IMPRESSIVE
FIRST-FLOOR APARTMENT
WHICH IS PART OF THE
B-LISTED ASHLUDIE
HOUSE (1866)"



First Floor
Approx. 83.0 sq. metres (893.4 sq. feet)



Total area: approx. 83.0 sq. metres (893.4 sq. feet)



GILSON GRAY
LAW • PROPERTY • FINANCE

GILSONGRAY.CO.UK

EDINBURGH

29 Rutland Square
EH1 2BW
0131 516 5366



GLASGOW

160 West George Street
G2 2HQ
0141 530 2021



EAST LOTHIAN

33 Westgate
EH39 4AG
01620 893 481



DUNDEE

11 South Tay Street
DD1 1NU
01382 201 000



BORDERS

01890 880 008



@gilsongrayprop



gilson gray property



gilson gray property



@gilsongrayprop

These particulars were prepared on the basis of our own knowledge of the local area and, in respect of the property itself, information supplied to us by our clients; all reasonable steps were taken at the time of preparing these particulars to ensure that all details contained in them were accurate. All statements contained in the particulars are for information only and all parties should not rely upon them as statements or representations of fact. In particular, (a) descriptions, measurements and dimensions, which may be quoted in these particulars are approximate only and (b) all references to conditions, planning permission, services, usage, constructions, fixtures and fittings and movable items contained in the property are for guidance only. Our clients may instruct us to set a closing date for offers at short notice and therefore if you wish to pursue interest in this property, you should immediately instruct your solicitor to note interest with us. Our clients reserve the right to conclude a bargain for the sale of the above subjects or any part thereof ahead of a notified closing date and will not be obliged to accept either the highest or indeed any offer for the above subjects or any part thereof. All measurements have been taken using a sonic tape and cannot be regarded as guaranteed given the limitations of the device. Services and/or appliances referred to in these particulars have not been tested and no warranty is given that they are in full working order.