



## 9 Hutchison Loan

Chesser, Edinburgh, EH14 1QF

*We sell homes, not just houses*







## 9 Hutchison Loan

*This main-door lower villa in the Chesser area of the city enjoys well-presented interiors, two bedrooms, a generous reception room, a modern kitchen, and a contemporary shower room, as well as a private, low-maintenance front garden, access to a shared garden, and unrestricted on-street parking.*

*Extras: all fitted floor coverings, window coverings, light fittings, and integrated kitchen appliances will be included in the sale.*



## Features

- Lower villa in Chesser with attractive, modern interiors
- Welcoming entrance hallway
- Generous and elegant living room with fireplace
- Modern kitchen
- Two double bedrooms with storage
- Contemporary shower room
- Private, low-maintenance front garden
- Access to a communal garden
- Unrestricted on-street parking
- Gas central heating and double glazing
- EPC Rating - C





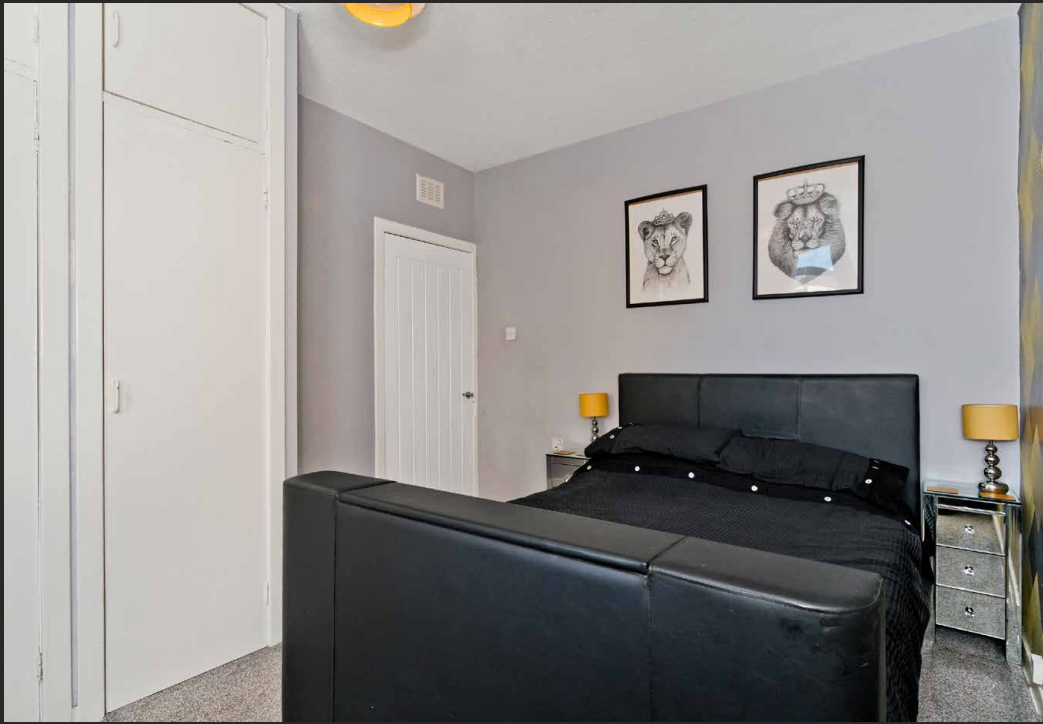
“Generous and elegant living room  
with fireplace”











“Lower villa in Chesser with attractive, modern interiors”









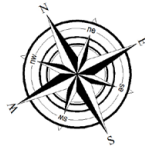




# Floorplan

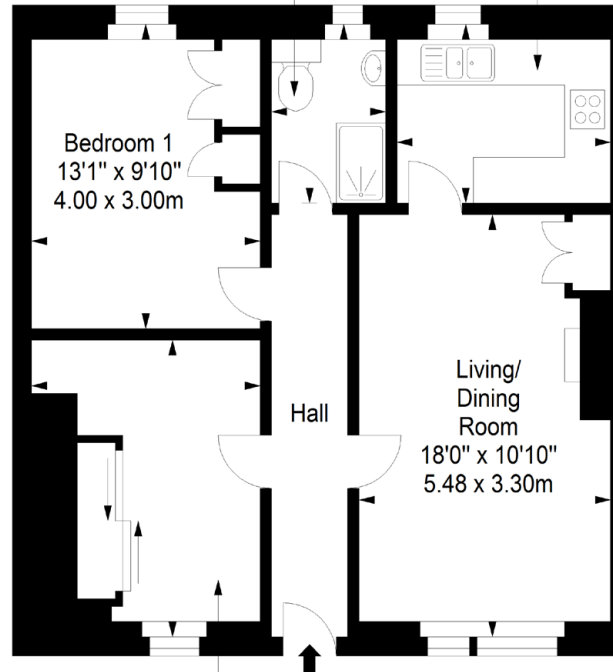
## Ground Floor

Approx. 58.2 sq. metres (626.5 sq. feet)



Shower Room  
7'7" x 4'9"  
2.30 x 1.46m

Kitchen  
9'2" x 7'7"  
2.80 x 2.30m



Bedroom 1  
13'1" x 9'10"  
4.00 x 3.00m

Living/  
Dining  
Room  
18'0" x 10'10"  
5.48 x 3.30m

Hall

Bedroom 2  
13'1" x 9'10"  
4.00 x 3.00m

Total area: approx. 58.2 sq. metres (626.5 sq. feet)

LEGAL OFFICE: 89-91 Morrison Street, Edinburgh, EH3 8BU

0131 337 7771

[www.dancys-solicitors.co.uk](http://www.dancys-solicitors.co.uk)

### DISCLAIMER

These particulars are intended to give a fair description of the property but their accuracy cannot be guaranteed, and they do not constitute or form part of an offer of contract. Intending purchasers must rely on their own inspection of the property. None of the above appliances/services have been tested by ourselves. We recommend purchasers arrange for a qualified person to check all appliances/services before legal commitment. Whilst every attempt has been made to ensure the accuracy of the floorplan contained here, measurements of doors, windows, rooms and any other items are approximate and no responsibility is taken for any error, omission, or misstatement. This plan is for illustrative purposes only and should be used as such by any prospective purchaser.

