



**cochrandickie**  
ESTATE AGENCY

**'The Range House'**  
**Foxbar Road,**  
Elderslie PA5 9UP

[www.cochrandickie.co.uk](http://www.cochrandickie.co.uk)







## 'The Range House'

### Foxbar Road,

Elderslie PA5 9UP

'The Range House' is one of those property's you may have driven past and wondered 'what's the history of that house'?! Well, it was actually a rifle range and examining old maps suggests the range was probably built before World War 1.

The original design was of an Indian bungalow complete with veranda which is what you see surrounding the front today. The property was inhabited as a family home sometime in the mid 1960's. The property now sits in stunning garden grounds of 1.1a or thereabouts and the accommodation extends to 211 sqm.

Upon arriving via the substantial stone chipped driveway you get a sense of the scale of the plot and the privacy surrounding. An entrance vestibule leads to the broad reception hallway which has the contemporary designed family bathroom off complete with freestanding bath, separate shower, WC and wash hand basin all complemented with Porcelanosa tiling.

To the front is the stunning drawing room with deep bay window and feature fireplace which has French doors to the side elevation as well as a study. This is a beautiful part of the house and has open aspects to the fields and farm at the front.

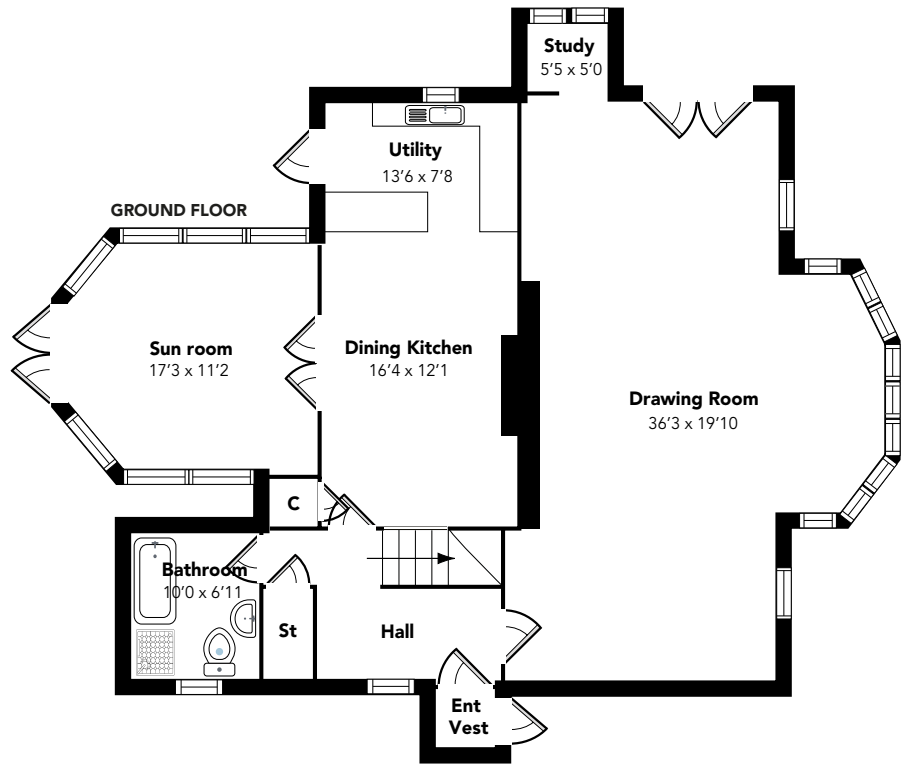
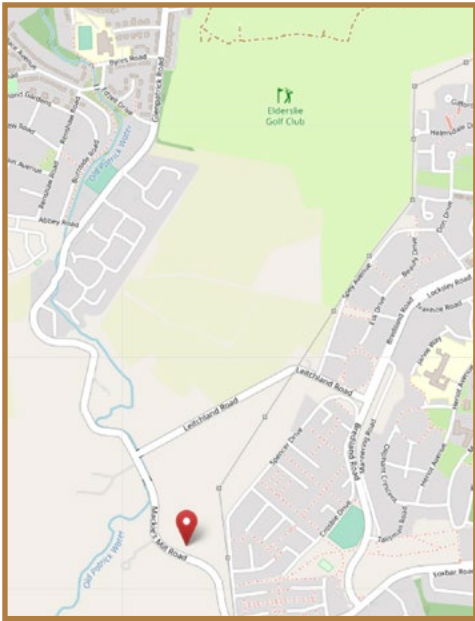
The dining kitchen is to the rear and has a fantastic sized utility room with door to the rear patio area. The kitchen has ample wall & base units with a freestanding 'Rangemaster' range and space for a dining table in the centre. From here there are French doors leading to a sunroom that again has doors to the patio area and gardens.

A carpeted stairwell leads to four bedrooms, one of which has an en-suite bathroom and each of the bedrooms has built-in wardrobes, eave storage or both.

Externally the garden grounds are fantastic, wrapping around the property with mature trees and lawn bordered on two sides by farmland. There is a double detached garage at the top of the driveway and a stable block with three boxes.

'The Range House' is possibly a once in a lifetime opportunity given it has only had four previous owners since it was occupied as a family home. It sits between the village of Elderslie and Foxbar and is an easy commute to Glasgow Airport and the M8 Motorway Network.



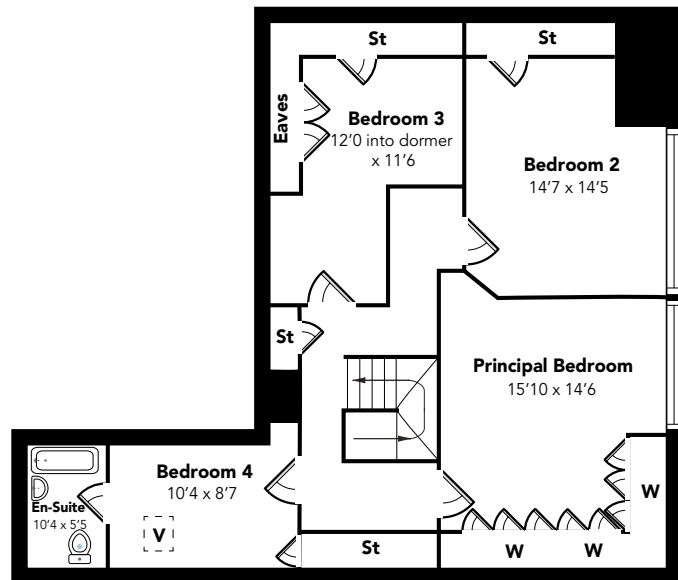


EPC rating  
E

Office  
Paisley

**disclaimer**  
Whilst we endeavour to make these particulars as accurate as possible, they do not form part of any contract of offer, nor are they guaranteed. Measurements are approximate and in most cases are taken with a digital/ sonic-measuring device and are taken to the widest point. We have not tested the electricity, gas or water services or any appliances. Photographs are reproduced for general information and it must not be inferred that any item is included for sale with the property. If there is any part of this that you find misleading or simply wish clarification on any point, please contact our office immediately when we will endeavour to assist you in any way possible.

FIRST FLOOR



Floorplans are indicative only - not to scale  
Produced by Plushplans

## Our Offices

21 Moss Street, Paisley PA1 1BX  
LP7 Paisley  
t. 0141 840 6555  
f. 0141 848 9168  
paisley@cochrandickie.co.uk

3 Neva Place, Main Street, Bridge of Weir PA11 3PN  
t. 01505 613 807  
f. 01505 615 682  
bridgeofweir@cochrandickie.co.uk

www.cochrandickie.co.uk

